

## Recombinant Human IRS2 Protein (Ser985-Ala1255), N-His tagged

Cat. No. IRS2-3213H Lot. No. (See product label)

### SPECIFICATION

<b>Product Overview</b>	Recombinant human IRS2 (Ser985-Ala1255) protein fused with the N-His tag was expressed in E. coli.
<b>Species</b>	Human
<b>Source</b>	E.coli
<b>ProteinLength</b>	Ser985-Ala1255
<b>Molecular Mass</b>	29.62 kDa
<b>Purity</b>	>90 % as determined by SDS-PAGE.
<b>Notes</b>	For research use only.
<b>Storage</b>	Use a manual defrost freezer and avoid repeated freeze thaw cycles. Store at 2 to 8 centigrade for one week. Store at -20 to -80 centigrade for twelve months from the date of receipt.
<b>Storage Buffer</b>	0.01M PBS, pH 7.4, 0.02 % NLS
<b>Reconstitution</b>	Reconstitute in sterile water for a stock solution.
<b>Shipping</b>	In general, proteins are provided as lyophilized powder/frozen liquid. They are

 Tel: 1-631-559-9269 1-516-512-3133

 Email: [info@creative-biomart.com](mailto:info@creative-biomart.com)  Fax: 1-631-938-8127

 45-1 Ramsey Road, Shirley, NY 11967, USA

shipped out with dry ice/blue ice unless customers require otherwise.

## GENE INFORMATION

**Gene Name** IRS2 insulin receptor substrate 2 [ Homo sapiens (human) ]

**Official Symbol** IRS2

**Synonyms** IRS2; insulin receptor substrate 2; IRS-2;

**Gene ID** 8660

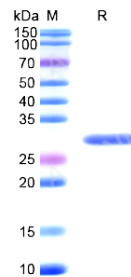
**mRNA Refseq** NM\_003749

**Protein Refseq** NP\_003740

**MIM** 600797

**UniProt ID** Q9Y4H2

## SDS-PAGE



 Tel: 1-631-559-9269 1-516-512-3133

 Email: [info@creative-biomart.com](mailto:info@creative-biomart.com)  Fax: 1-631-938-8127

 45-1 Ramsey Road, Shirley, NY 11967, USA