

Recombinant Human IRS2 Protein, GST-tagged

Cat. No. IRS2-5029H Lot. No. (See product label)

SPECIFICATION

Product Overview	Human IRS2 partial ORF (NP_003740.2, 494 a.a. - 603 a.a.) recombinant protein with GST-tag at N-terminal.
Species	Human
Source	Wheat Germ
Description	This gene encodes the insulin receptor substrate 2, a cytoplasmic signaling molecule that mediates effects of insulin, insulin-like growth factor 1, and other cytokines by acting as a molecular adaptor between diverse receptor tyrosine kinases and downstream effectors. The product of this gene is phosphorylated by the insulin receptor tyrosine kinase upon receptor stimulation, as well as by an interleukin 4 receptor-associated kinase in response to IL4 treatment. [provided by RefSeq
Molecular Mass	37.84 kDa
AA Sequence	DPGFMSLDEYGSSPGDLRAFCSHRSNTPESIAETPPARDGGGGGGEFYGYMTMDRP LSHCGRSYRRVSGDAAQDLDRGLRKRTYSLTTPARQRPVQPSSASLDEYTLMRA
Applications	Enzyme-linked Immunoabsorbent Assay Western Blot (Recombinant protein) Antibody Production Protein Array
Notes	Best use within three months from the date of receipt of this protein.

 Tel: 1-631-559-9269 1-516-512-3133

 Email: info@creative-biomart.com  Fax: 1-631-938-8127

 45-1 Ramsey Road, Shirley, NY 11967, USA

Storage Store at -80 centigrade. Aliquot to avoid repeated freezing and thawing.

Storage Buffer 50 mM Tris-HCl, 10 mM reduced Glutathione, pH=8.0 in the elution buffer.

GENE INFORMATION

Gene Name IRS2 insulin receptor substrate 2 [Homo sapiens]

Official Symbol IRS2

Synonyms IRS2; insulin receptor substrate 2; IRS-2;

Gene ID 8660

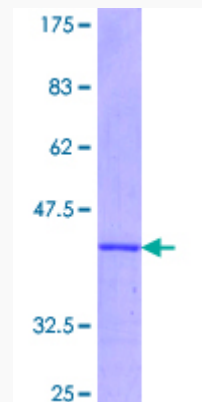
mRNA Refseq NM_003749

Protein Refseq NP_003740

MIM 600797

UniProt ID Q9Y4H2

Quality Control Testing



 Tel: 1-631-559-9269 1-516-512-3133

 Email: info@creative-biomart.com  Fax: 1-631-938-8127

 45-1 Ramsey Road, Shirley, NY 11967, USA



12.5% SDS-PAGE Stained with Coomassie Blue

 Tel: 1-631-559-9269 1-516-512-3133

 Email: info@creative-biomart.com  Fax: 1-631-938-8127

 45-1 Ramsey Road, Shirley, NY 11967, USA