

Recombinant Human IRS4 Protein, GST-tagged

Cat. No. IRS4-5028H Lot. No. (See product label)

SPECIFICATION

Product Overview	Human IRS4 partial ORF (NP_003595, 850 a.a. - 950 a.a.) recombinant protein with GST-tag at N-terminal.
Species	Human
Source	Wheat Germ
Description	IRS4 encodes the insulin receptor substrate 4, a cytoplasmic protein that contains many potential tyrosine and serine/threonine phosphorylation sites. Tyrosine-phosphorylated IRS4 protein has been shown to associate with cytoplasmic signalling molecules that contain SH2 domains. The IRS4 protein is phosphorylated by the insulin receptor tyrosine kinase upon receptor stimulation.. [provided by RefSeq
Molecular Mass	36.85 kDa
AA Sequence	DPKDAASKPSGEGSFSKPGDGGSPSKPSDHEPPKNKAKRPNRLSFITKGYKIKPKP QKPTHEQREADSSSDYVNMDFTKRESNTPAPSTQGLPDSWGIIE
Applications	Enzyme-linked Immunoabsorbent Assay Western Blot (Recombinant protein) Antibody Production Protein Array
Notes	Best use within three months from the date of receipt of this protein.

 Tel: 1-631-559-9269 1-516-512-3133

 Email: info@creative-biomart.com  Fax: 1-631-938-8127

 45-1 Ramsey Road, Shirley, NY 11967, USA

Storage Store at -80 centigrade. Aliquot to avoid repeated freezing and thawing.

Storage Buffer 50 mM Tris-HCl, 10 mM reduced Glutathione, pH=8.0 in the elution buffer.

GENE INFORMATION

Gene Name IRS4 insulin receptor substrate 4 [Homo sapiens]

Official Symbol IRS4

Synonyms IRS4; insulin receptor substrate 4; IRS 4; PY160; pp160; phosphoprotein of 160 kDa; 160 kDa phosphotyrosine protein; IRS-4;

Gene ID 8471

mRNA Refseq NM_003604

Protein Refseq NP_003595

MIM 603510

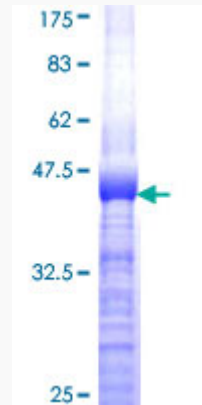
UniProt ID O14654

 Tel: 1-631-559-9269 1-516-512-3133

 Email: info@creative-biomart.com  Fax: 1-631-938-8127

 45-1 Ramsey Road, Shirley, NY 11967, USA

**Quality Control
Testing**



12.5% SDS-PAGE Stained with Coomassie Blue

 Tel: 1-631-559-9269 1-516-512-3133

 Email: info@creative-biomart.com  Fax: 1-631-938-8127

 45-1 Ramsey Road, Shirley, NY 11967, USA