

## Recombinant Human IRX2 Protein, GST-tagged

Cat. No. IRX2-5025H Lot. No. (See product label)

### SPECIFICATION

<b>Product Overview</b>	Human IRX2 full-length ORF ( NP_150366.1, 1 a.a. - 471 a.a.) recombinant protein with GST-tag at N-terminal.
<b>Species</b>	Human
<b>Source</b>	Wheat Germ
<b>Description</b>	IRX2 is a member of the Iroquois homeobox gene family. Members of this family appear to play multiple roles during pattern formation of vertebrate embryos.[supplied by OMIM
<b>Molecular Mass</b>	75.5 kDa
<b>AA Sequence</b>	<p>MSYPQGYLYQAPGSLALYSCPAYGASALAAPRSEELARSASGSFAFSPYPGSAAF            TAQAATGFGSPLQYSADAAAAAAGFPSYMGAPYDAHTTGMTGAISYHPYGSAAYPYQ            LNDPAYRKNATRDATATLKAWLNEHRKNPYPTKGEKIMLAIITKMTLTQVSTWFANA            RRRLKKENKMTWAPRNKSEDEDEDEDEGDATR SKDESPDKAQEGTETS AEDEGISLH            VDSLTDHSCSAESDGEKLP CRAGDPLCESGSECKDKYDDLEDDDDDEEGERGLA            PPKPVTSSPLTGLEAPLLSPPPEAAPRGGGRKTPQGSRTSPGAPPPASKPKLWSLAEI            ATSDLKQPSLGP GCGPPGLPAAAA PASTGAPPGGSPYPASPLLGRPLYTSPFYGN            YTNYGNLNAALQGQGLLRYSAAAA PGEALHTAPKAASDAGKAGAHPLESHYRSP            GGGYEPKKDASEGCTVVG GGVQPYL</p>
<b>Applications</b>	Enzyme-linked Immunoabsorbent Assay Western Blot (Recombinant protein)

 Tel: 1-631-559-9269 1-516-512-3133

 Email: [info@creative-biomart.com](mailto:info@creative-biomart.com)  Fax: 1-631-938-8127

 45-1 Ramsey Road, Shirley, NY 11967, USA



Antibody Production  
Protein Array

**Notes**

Best use within three months from the date of receipt of this protein.

**Storage**

Store at -80 centigrade. Aliquot to avoid repeated freezing and thawing.

**Storage Buffer**

50 mM Tris-HCl, 10 mM reduced Glutathione, pH=8.0 in the elution buffer.

**GENE INFORMATION**

**Gene Name**

IRX2 iroquois homeobox protein 2 [ Homo sapiens ]

**Official Symbol**

IRX2

**Synonyms**

IRX2; iroquois homeobox protein 2

**Gene ID**

93965

**MIM**

606198

**UniProt ID**

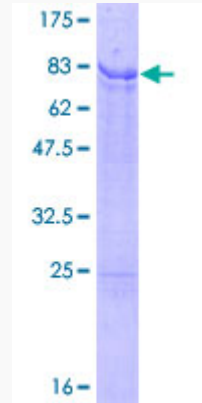
Q9BZ11

 Tel: 1-631-559-9269 1-516-512-3133

 Email: [info@creative-biomart.com](mailto:info@creative-biomart.com)  Fax: 1-631-938-8127

 45-1 Ramsey Road, Shirley, NY 11967, USA

**Quality Control  
Testing**



12.5% SDS-PAGE Stained with Coomassie Blue

 Tel: 1-631-559-9269 1-516-512-3133

 Email: [info@creative-biomart.com](mailto:info@creative-biomart.com)  Fax: 1-631-938-8127

 45-1 Ramsey Road, Shirley, NY 11967, USA