

Recombinant Human IRX5 Protein, GST-tagged

Cat. No. IRX5-5022H Lot. No. (See product label)

SPECIFICATION

Product Overview	Human IRX5 partial ORF (NP_005844, 204 a.a. - 264 a.a.) recombinant protein with GST-tag at N-terminal.
Species	Human
Source	Wheat Germ
Description	IRX5 is a member of the Iroquois homeobox gene family. Members of this family appear to play multiple roles during pattern formation of vertebrate embryos.[supplied by OMIM
Molecular Mass	32.45 kDa
AA Sequence	PQKPEDKADPEGPEAGGAEQKAASGCERLQGPPTPAGKETEGSLSDSDFKEPPSE GRLDAL
Applications	Enzyme-linked Immunoabsorbent Assay Western Blot (Recombinant protein) Antibody Production Protein Array
Notes	Best use within three months from the date of receipt of this protein.
Storage	Store at -80 centigrade. Aliquot to avoid repeated freezing and thawing.

 Tel: 1-631-559-9269 1-516-512-3133

 Email: info@creative-biomart.com  Fax: 1-631-938-8127

 45-1 Ramsey Road, Shirley, NY 11967, USA

Storage Buffer 50 mM Tris-HCl, 10 mM reduced Glutathione, pH=8.0 in the elution buffer.

GENE INFORMATION

Gene Name IRX5 iroquois homeobox 5 [Homo sapiens]

Official Symbol IRX5

Synonyms IRX5; iroquois homeobox 5; iroquois-class homeodomain protein IRX-5; IRX 2a; homeodomain protein IRXB2; homeodomain protein IRX-2A; iroquois homeobox protein 5; IRXB2; IRX-2a;

Gene ID 10265

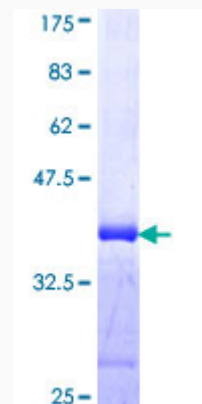
mRNA Refseq NM_001252197

Protein Refseq NP_001239126

MIM 606195

UniProt ID P78411

Quality Control Testing



 Tel: 1-631-559-9269 1-516-512-3133

 Email: info@creative-biomart.com  Fax: 1-631-938-8127

 45-1 Ramsey Road, Shirley, NY 11967, USA



12.5% SDS-PAGE Stained with Coomassie Blue

 Tel: 1-631-559-9269 1-516-512-3133

 Email: info@creative-biomart.com  Fax: 1-631-938-8127

 45-1 Ramsey Road, Shirley, NY 11967, USA