

Recombinant Human ISCA1 Protein, GST-tagged

Cat. No. ISCA1-4605H **Lot. No.** (See product label)

SPECIFICATION

Product Overview	Human HBLD2 full-length ORF (AAH02675, 1 a.a. - 129 a.a.) recombinant protein with GST-tag at N-terminal.
Species	Human
Source	Wheat Germ
Description	ISCA1 is a mitochondrial protein involved in the biogenesis and assembly of iron-sulfur clusters, which play a role in electron-transfer reactions (Cozar-Castellano et al., 2004 [PubMed 15262227]).[supplied by OMIM
Molecular Mass	39.93 kDa
AA Sequence	MSASLVRATVRAVSKRKLQPTRAALTLTPSAVNKIKQLLKDKPEHVGKVGVRTRGC NGLSYTLEYTKTKGDSDEEVIQDGVRFIEKKAQLTLLGTEMDYVEDKLSSEFVFNN PNIKGTCGCGESFNI
Applications	Enzyme-linked Immunoabsorbent Assay Western Blot (Recombinant protein) Antibody Production Protein Array
Notes	Best use within three months from the date of receipt of this protein.
Storage	Store at -8 centigrade. Aliquot to avoid repeated freezing and thawing.

 Tel: 1-631-559-9269 1-516-512-3133

 Email: info@creative-biomart.com  Fax: 1-631-938-8127

 45-1 Ramsey Road, Shirley, NY 11967, USA

Storage Buffer 50 mM Tris-HCl, 10 mM reduced Glutathione, pH=8.0 in the elution buffer.

GENE INFORMATION

Gene Name [ISCA1 iron-sulfur cluster assembly 1 homolog \(S. cerevisiae\) \[Homo sapiens \]](#)

Official Symbol [ISCA1](#)

Synonyms ISCA1; iron-sulfur cluster assembly 1 homolog (S. cerevisiae); HBLD2, HESB like domain containing 2; iron-sulfur cluster assembly 1 homolog, mitochondrial; hIsCA; ISA1; MGC4276; HESB like domain containing 2; iron sulfur assembly protein IscA; iron-sulfur assembly protein IscA; HESB-like domain-containing protein 2; HBLD2; RP11-507D14.2;

Gene ID [81689](#)

mRNA Refseq [NM_030940](#)

Protein Refseq [NP_112202](#)

MIM [611006](#)

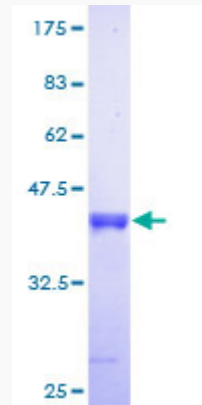
UniProt ID [Q9BUE6](#)

 Tel: 1-631-559-9269 1-516-512-3133

 Email: info@creative-biomart.com  Fax: 1-631-938-8127

 45-1 Ramsey Road, Shirley, NY 11967, USA

**Quality Control
Testing**



12.5% SDS-PAGE Stained with Coomassie Blue.

 Tel: 1-631-559-9269 1-516-512-3133

 Email: info@creative-biomart.com  Fax: 1-631-938-8127

 45-1 Ramsey Road, Shirley, NY 11967, USA