

Recombinant Human ISCA2 protein, GST-tagged

Cat. No. ISCA2-166H Lot. No. (See product label)

SPECIFICATION

Product Overview	Recombinant Human ISCA2 protein(1-154 aa), fused with N-terminal GST tag, was expressed in E.coli.
Species	Human
Source	E.coli
ProteinLength	1-154 aa
Form	The purified protein was lyophilized from sterile phosphate-buffered saline (PBS: 58 mM Na ₂ HPO ₄ , 17 mM NaH ₂ PO ₄ , 68 mM NaCl, pH 8.0). Prior to lyophilization, 5% (w/v) trehalose and 5% (w/v) mannitol were incorporated as cryoprotective excipients. The protein was eluted with a buffer containing 100 mM reduced glutathione (GSH).
AASequence	MAAAWGSSLTAAATQRAVTPWPRGRLLTASLGPQARREASSSSPEAGEGQICLTDS CVQRLLLEITEGSEFLRLQVEGGGCSGFQYKFSLDTVINPDDRVEQGGARVVVDSD SLAFVKGAQVDFSQELIRSSFQVLNNPQAQQGCSCGSSFSIKL
Purity	85%, by SDS-PAGE with Coomassie Brilliant Blue staining.
Storage	Store at 2-8°C for 1-2 weeks. Aliquot and store at -20°C to -80°C for up to 3 months, reconstitution with sterile water and addition of an equal volume of glycerol. Avoid repeat freeze-thaw cycles.

 Tel: 1-631-559-9269 1-516-512-3133

 Email: info@creative-biomart.com  Fax: 1-631-938-8127

 45-1 Ramsey Road, Shirley, NY 11967, USA

Reconstitution

Dissolve the product in 200 µl sterile water to achieve a working concentration of 0.25 g/µl. If experimental compatibility allows, mix the aqueous solution with an equal volume of glycerol (1:1 ratio) after initial reconstitution.

GENE INFORMATION

Gene Name ISCA2 iron-sulfur cluster assembly 2 homolog (*S. cerevisiae*) [*Homo sapiens*]

Official Symbol ISCA2

Synonyms

ISCA2; iron-sulfur cluster assembly 2 homolog (*S. cerevisiae*); HBLD1, HesB like domain containing 1; iron-sulfur cluster assembly 2 homolog, mitochondrial; ISA2; HesB like domain containing 1; HESB-like domain-containing protein 1; HBLD1; c14_5557;

Gene ID 122961

mRNA Refseq NM_194279

Protein Refseq NP_919255

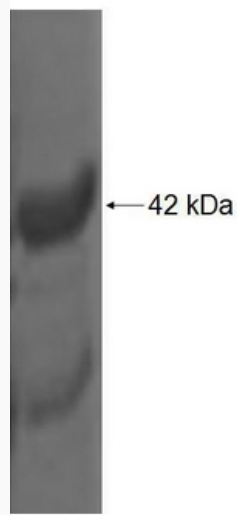
UniProt ID Q86U28

 Tel: 1-631-559-9269 1-516-512-3133

 Email: info@creative-biomart.com  Fax: 1-631-938-8127

 45-1 Ramsey Road, Shirley, NY 11967, USA

SDS-PAGE



 Tel: 1-631-559-9269 1-516-512-3133

 Email: info@creative-biomart.com  Fax: 1-631-938-8127

 45-1 Ramsey Road, Shirley, NY 11967, USA