

Recombinant Human ISCA2 Protein, Myc/DDK-tagged, C13 and N15-labeled

Cat. No. ISCA2-3880H **Lot. No.** (See product label)

SPECIFICATION

Product Overview	ISCA2 MS Standard C13 and N15-labeled recombinant protein (NP_919255) with a C-terminal MYC/DDK tag, was expressed in HEK293 cells.
Species	Human
Source	HEK293
Description	The protein encoded by this gene is an A-type iron-sulfur cluster (ISC) protein found in mitochondria. The encoded protein appears to be involved in the maturation of mitochondrial iron-sulfur proteins. Two transcript variants encoding different isoforms have been found for this gene.
Molecular Mass	16.4 kDa
AA Sequence	MAAAWGSSLTAAATQRAVTPWPRGRLLTASLGPQARREASSSSPEAGEGQICLTDS CVQRLLLEITEGSEFLRLQVEGGGCSGFQYKFSLDTVINPDDRVEQGGARVVVDS SLAFVKGAQVDFSQELIRSSFQVLNNPQAQQGCSCGSSFSIKLTRTRPLEQKLISEE DLAANDILDYKDDDDKV
Purity	> 80% as determined by SDS-PAGE and Coomassie blue staining
Stability	Stable for 3 months from receipt of products under proper storage and handling conditions.

 Tel: 1-631-559-9269 1-516-512-3133

 Email: info@creative-biomart.com  Fax: 1-631-938-8127

 45-1 Ramsey Road, Shirley, NY 11967, USA

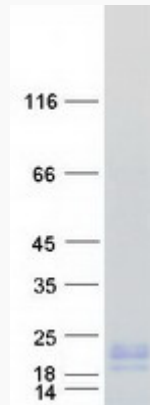
Storage	Store at -80 centigrade. Avoid repeated freeze-thaw cycles.
Concentration	50 µg/mL as determined by BCA
Storage Buffer	100 mM glycine, 25 mM Tris-HCl, pH 7.3.
GENE INFORMATION	
Gene Name	ISCA2 iron-sulfur cluster assembly 2 [Homo sapiens (human)]
Official Symbol	ISCA2
Synonyms	ISCA2; iron-sulfur cluster assembly 2 homolog (S. cerevisiae); HBLD1, HesB like domain containing 1; iron-sulfur cluster assembly 2 homolog, mitochondrial; ISA2; HesB like domain containing 1; HESB-like domain-containing protein 1; HBLD1; c14_5557;
Gene ID	122961
mRNA Refseq	NM_194279
Protein Refseq	NP_919255
MIM	615317
UniProt ID	Q86U28

 Tel: 1-631-559-9269 1-516-512-3133

 Email: info@creative-biomart.com  Fax: 1-631-938-8127

 45-1 Ramsey Road, Shirley, NY 11967, USA

SDS-PAGE



 Tel: 1-631-559-9269 1-516-512-3133

 Email: info@creative-biomart.com  Fax: 1-631-938-8127

 45-1 Ramsey Road, Shirley, NY 11967, USA