

Recombinant Human ISCA2 Protein, GST-tagged

Cat. No. ISCA2-4604H **Lot. No.** (See product label)

SPECIFICATION

Product Overview	Human HBLD1 full-length ORF (NP_919255.1, 1 a.a. - 154 a.a.) recombinant protein with GST-tag at N-terminal.
Species	Human
Source	Wheat Germ
Description	The protein encoded by this gene is an A-type iron-sulfur cluster (ISC) protein found in mitochondria. The encoded protein appears to be involved in the maturation of mitochondrial iron-sulfur proteins. Two transcript variants encoding different isoforms have been found for this gene. [provided by RefSeq, Dec 2012]
Molecular Mass	42.8 kDa
AA Sequence	MAAAWGSSLTAAATQRAVTPWPRGRLLTASLGPQARREASSSSPEAGEGQICLTDS CVQRLLLEITEGSEFLRLQVEGGGCSGFQYKFSLDTVINPDDRVEQGGARVVVDS SLAFVKGAQVDFSQELIRSSFQVLNNPQAQQGCSCGSSFSIKL
Applications	Enzyme-linked Immunoabsorbent Assay Western Blot (Recombinant protein) Antibody Production Protein Array
Notes	Best use within three months from the date of receipt of this protein.

 Tel: 1-631-559-9269 1-516-512-3133

 Email: info@creative-biomart.com  Fax: 1-631-938-8127

 45-1 Ramsey Road, Shirley, NY 11967, USA

Storage Store at -8 centigrade. Aliquot to avoid repeated freezing and thawing.

Storage Buffer 50 mM Tris-HCl, 10 mM reduced Glutathione, pH=8.0 in the elution buffer.

GENE INFORMATION

Gene Name ISCA2 iron-sulfur cluster assembly 2 homolog (*S. cerevisiae*) [*Homo sapiens*]

Official Symbol ISCA2

Synonyms ISCA2; iron-sulfur cluster assembly 2 homolog (*S. cerevisiae*); HBLD1, HesB like domain containing 1; iron-sulfur cluster assembly 2 homolog, mitochondrial; ISA2; HesB like domain containing 1; HESB-like domain-containing protein 1; HBLD1; c14_5557;

Gene ID 122961

mRNA Refseq NM_194279

Protein Refseq NP_919255

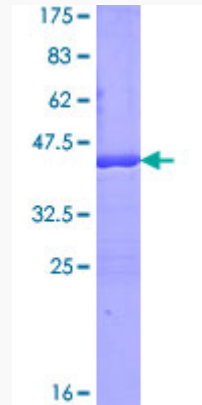
UniProt ID Q86U28

 Tel: 1-631-559-9269 1-516-512-3133

 Email: info@creative-biomart.com  Fax: 1-631-938-8127

 45-1 Ramsey Road, Shirley, NY 11967, USA

**Quality Control
Testing**



12.5% SDS-PAGE Stained with Coomassie Blue.

 Tel: 1-631-559-9269 1-516-512-3133

 Email: info@creative-biomart.com  Fax: 1-631-938-8127

 45-1 Ramsey Road, Shirley, NY 11967, USA