

Recombinant Human ISG15 Protein, Myc/DDK-tagged, C13 and N15-labeled

Cat. No. ISG15-1002H **Lot. No.** (See product label)

SPECIFICATION

Product Overview

ISG15 MS Standard C13 and N15-labeled recombinant protein (NP_005092) with a C-terminal MYC/DDK tag, was expressed in HEK293 cells.

Species

Human

Source

HEK293

Description

The protein encoded by this gene is a ubiquitin-like protein that is conjugated to intracellular target proteins upon activation by interferon-alpha and interferon-beta. Several functions have been ascribed to the encoded protein, including chemotactic activity towards neutrophils, direction of ligated target proteins to intermediate filaments, cell-to-cell signaling, and antiviral activity during viral infections. While conjugates of this protein have been found to be noncovalently attached to intermediate filaments, this protein is sometimes secreted.

Molecular Mass

17.9 kDa

AA Sequence

MGWDLTVKMLAGNEFQVSLSSSMSVSELKAQITQKIGVHAFQQRLAVHPSGVALQD
RVPLASQGLGPGSTVLLVVDKCDEPLNILVRNNGRSSTYEVRLTQTVAHLKQQVS
GLEGVQDDLFWLTFEGKPLEDQLPLGEYGLKPLSTVFMNLRRLRGGGTEPGGRSTR
RPLEQKLISEEDLAANDILDYKDDDDKV

Purity

> 80% as determined by SDS-PAGE and Coomassie blue staining

 Tel: 1-631-559-9269 1-516-512-3133

 Email: info@creative-biomart.com  Fax: 1-631-938-8127

 45-1 Ramsey Road, Shirley, NY 11967, USA

Stability	Stable for 3 months from receipt of products under proper storage and handling conditions.
Storage	Store at -80 centigrade. Avoid repeated freeze-thaw cycles.
Concentration	50 µg/mL as determined by BCA
Storage Buffer	100 mM glycine, 25 mM Tris-HCl, pH 7.3.

GENE INFORMATION

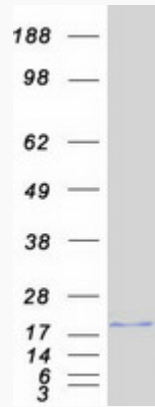
Gene Name	ISG15 ISG15 ubiquitin-like modifier [Homo sapiens (human)]
Official Symbol	ISG15
Synonyms	ISG15; ISG15 ubiquitin-like modifier; G1P2, interferon, alpha inducible protein (clone IFI 15K); ubiquitin-like protein ISG15; IFI15; UCRP; ubiquitin cross-reactive protein; interferon-induced 15 kDa protein; interferon-induced 17 kDa protein; interferon-stimulated protein, 15 kDa; interferon-induced 17-kDa/15-kDa protein; interferon, alpha-inducible protein (clone IFI-15K); G1P2; IP17; hUCRP;
Gene ID	9636
mRNA Refseq	NM_005101
Protein Refseq	NP_005092
MIM	147571
UniProt ID	P05161

 Tel: 1-631-559-9269 1-516-512-3133

 Email: info@creative-biomart.com  Fax: 1-631-938-8127

 45-1 Ramsey Road, Shirley, NY 11967, USA

SDS-PAGE



 Tel: 1-631-559-9269 1-516-512-3133

 Email: info@creative-biomart.com  Fax: 1-631-938-8127

 45-1 Ramsey Road, Shirley, NY 11967, USA