

Recombinant Human ISG15 protein

Cat. No. ISG15-2606H **Lot. No.** (See product label)

SPECIFICATION

Product Overview	Recombinant Human ISG15 Protein is produced by E. coli expression system. The target protein is expressed with sequence (Gly2-Gly157) of human ISG15 (Accession #NP_005092.1).
Species	Human
Source	E.coli
ProteinLength	Gly2-Gly157
Form	Lyophilized from a 0.22 µm filtered solution of PBS, pH 7.4.
Molecular Mass	16 kDa
Endotoxin	< 1.0 EU/µg of the protein by LAL method.
Purity	> 97% by SDS-PAGE.
Storage	Store the lyophilized protein at -20°C to -80 °C for long term. After reconstitution, the protein solution is stable at -20 °C for 3 months, at 2-8 °C for up to 1 week.
Reconstitution	Reconstitute to a concentration of 0.1-0.5 mg/mL in sterile distilled water.

GENE INFORMATION

 Tel: 1-631-559-9269 1-516-512-3133

 Email: info@creative-biomart.com  Fax: 1-631-938-8127

 45-1 Ramsey Road, Shirley, NY 11967, USA

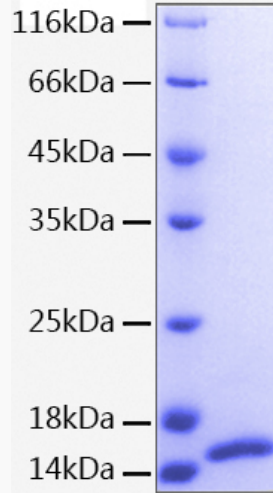
Gene Name	ISG15 ISG15 ubiquitin-like modifier [Homo sapiens]
Official Symbol	ISG15
Synonyms	ISG15; ISG15 ubiquitin-like modifier; G1P2, interferon, alpha inducible protein (clone IFI 15K); ubiquitin-like protein ISG15; IFI15; UCRP; ubiquitin cross-reactive protein; interferon-induced 15 kDa protein; interferon-induced 17 kDa protein; interferon-stimulated protein, 15 kDa; interferon-induced 17-kDa/15-kDa protein; interferon, alpha-inducible protein (clone IFI-15K); G1P2; IP17; hUCRP;
Gene ID	9636
mRNA Refseq	NM_005101
Protein Refseq	NP_005092
MIM	147571
UniProt ID	P05161

 Tel: 1-631-559-9269 1-516-512-3133

 Email: info@creative-biomart.com  Fax: 1-631-938-8127

 45-1 Ramsey Road, Shirley, NY 11967, USA

SDS-PAGE



 Tel: 1-631-559-9269 1-516-512-3133

 Email: info@creative-biomart.com  Fax: 1-631-938-8127

 45-1 Ramsey Road, Shirley, NY 11967, USA