

Recombinant Human ISG15 Ubiquitin-Like Modifier, Calmodulin-Tagged

Cat. No. ISG15-29H **Lot. No.** (See product label)

SPECIFICATION

Product Overview	Recombinant human ISG15 was expressed in E.coli and purified by conventional chromatography techniques, 34kDa (308aa).
Species	Human
Source	E.coli
ProteinLength	1-157 aa
Description	The interferon-stimulated gene, 15 kDa (ISG15) is an interferon regulated gene that is induced as a primary response to diverse microbial and cell stress stimuli, and encodes the founding member of the ubiquitin-like protein family. ISG15 shares several common properties with other ubiquitin-like molecules (UBLs), but its activity is tightly regulated by specific signaling pathways that have a role in innate immunity.
Form	Liquid. In 20 mM Tris-HCl buffer (pH 8.0) containing 1 mM DTT, 0.1 M NaCl
Purity	> 95% by SDS - PAGE.
Concentration	1 mg/ml (determined by Bradford assay)
Sequences of amino acids	MADQLTEEQI AEFKEAFSLF DKDGDGTITT KELGTVMRSL GQNPTEAELQ DMINEVDADG NGTIDFPEFL TMMARKMKDT DSEEEIREAF RVFDKDG NGY ISAAELRHVM TNLGEKLTDE EVDEMIREAD IDGDGQVNYE EfvQMMTAKG

 Tel: 1-631-559-9269 1-516-512-3133

 Email: info@creative-biomart.com  Fax: 1-631-938-8127

 45-1 Ramsey Road, Shirley, NY 11967, USA

SMGWDLTVKM LAGNEFQVSL SSSMSVSELK AQITQKIGVH A FQ Q RLAVHP
 SGVALQDRVP LASQGLPGS TVLLVVDKCD EPLNILVRNN KGRSSTYEVR
 LTQTV AHLKQ QVSGLEGVQD DLFWLT FEGK PLEDQ LP LGEYGLKPLSTVF
 MNLRLRGG

Storage

Can be stored at +4°C short term (1-2 weeks). For long term storage, aliquot and store at -20°C or -70°C. Avoid repeated freezing and thawing cycles.

GENE INFORMATION

Gene Name

ISG15 ISG15 ubiquitin-like modifier [Homo sapiens]

Synonyms

ISG15; G1P2; IFI15; UCRP; ISG15 ubiquitin-like modifier; OTTHUMP00000038464; ubiquitin cross-reactive protein; interferon-stimulated protein, 15 kDa; interferon-induced 17-kDa/15-kDa protein; ISG15 ubiquitin-like modifier; interferon, alpha-inducible protein (clone IFI-15K); interferon-induced 17-kDa/15-kDa protein; ubiquitin cross-reactive protein.

Gene ID

9636

mRNA Refseq

NM_005101

Protein Refseq

NP_005092

MIM

147571

UniProt ID

P05161

Chromosome

1p36.33

Location

 Tel: 1-631-559-9269 1-516-512-3133

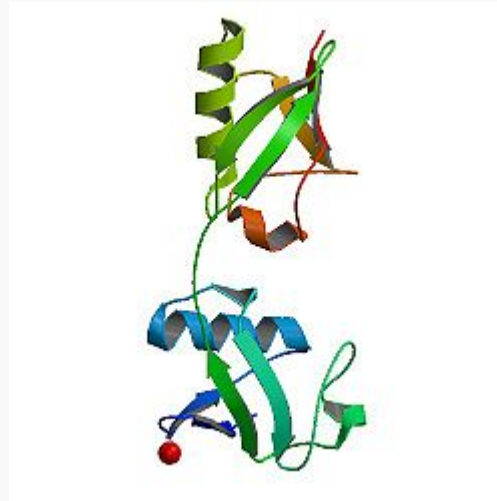
 Email: info@creative-biomart.com  Fax: 1-631-938-8127

 45-1 Ramsey Road, Shirley, NY 11967, USA

Function

protein binding; protein tag

PDB rendering based
on 1z2m. Available
structures: 1lm8,
1lqb, 1vcb, Available
structures: 1z2m,
2hj8



 Tel: 1-631-559-9269 1-516-512-3133

 Email: info@creative-biomart.com  Fax: 1-631-938-8127

 45-1 Ramsey Road, Shirley, NY 11967, USA