

Recombinant Human ISG15 Protein (Gly2-Gly157), C-His tagged

Cat. No. ISG15-3329H Lot. No. (See product label)

SPECIFICATION

Product Overview	Recombinant human ISG15 (Gly2-Gly157) protein fused with the C-terminal His tag was expressed in E. coli.
Species	Human
Source	E.coli
ProteinLength	Gly2-Gly157
Molecular Mass	17.16 kDa
Purity	>90 % as determined by SDS-PAGE.
Notes	For research use only.
Storage	Use a manual defrost freezer and avoid repeated freeze thaw cycles. Store at 2 to 8 centigrade for one week. Store at -20 to -80 centigrade for twelve months from the date of receipt.
Storage Buffer	Supplied as solution form in PBS or lyophilized from PBS.
Reconstitution	Reconstitute in sterile water for a stock solution.
Shipping	In general, proteins are provided as lyophilized powder/frozen liquid. They are

 Tel: 1-631-559-9269 1-516-512-3133

 Email: info@creative-biomart.com  Fax: 1-631-938-8127

 45-1 Ramsey Road, Shirley, NY 11967, USA

shipped out with dry ice/blue ice unless customers require otherwise.

GENE INFORMATION

Gene Name ISG15 ISG15 ubiquitin-like modifier [Homo sapiens (human)]

Official Symbol ISG15

Synonyms ISG15; ISG15 ubiquitin-like modifier; G1P2, interferon, alpha inducible protein (clone IFI 15K); ubiquitin-like protein ISG15; IFI15; UCRP; ubiquitin cross-reactive protein; interferon-induced 15 kDa protein; interferon-induced 17 kDa protein; interferon-stimulated protein, 15 kDa; interferon-induced 17-kDa/15-kDa protein; interferon, alpha-inducible protein (clone IFI-15K); G1P2; IP17; hUCRP;

Gene ID 9636

mRNA Refseq NM_005101

Protein Refseq NP_005092

MIM 147571

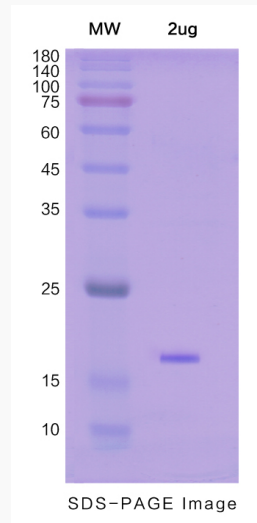
UniProt ID P05161

 Tel: 1-631-559-9269 1-516-512-3133

 Email: info@creative-biomart.com  Fax: 1-631-938-8127

 45-1 Ramsey Road, Shirley, NY 11967, USA

SDS-PAGE



 Tel: 1-631-559-9269 1-516-512-3133

 Email: info@creative-biomart.com  Fax: 1-631-938-8127

 45-1 Ramsey Road, Shirley, NY 11967, USA