

Recombinant Mouse ISG15 protein(1-155aa), His&Myc-tagged

Cat. No. ISG15-4331M Lot. No. (See product label)

SPECIFICATION

Product Overview	Recombinant Mouse ISG15 protein(Q64339)(1-155aa), fused with N-terminal His tag and C-terminal Myc tag, was expressed in E.coli.
Species	Mouse
Source	E.coli
ProteinLength	1-155aa
Form	If the delivery form is liquid, the default storage buffer is Tris/PBS-based buffer, 5%-50% glycerol. If the delivery form is lyophilized powder, the buffer before lyophilization is Tris/PBS-based buffer, 6% Trehalose, pH 8.0.
Molecular Mass	24.9 kDa
Purity	Greater than 85% as determined by SDS-PAGE.
Storage	Store at -20°C/-80°C upon receipt, aliquoting is necessary for mutiple use. Avoid repeated freeze-thaw cycles.
Reconstitution	We recommend that this vial be briefly centrifuged prior to opening to bring the contents to the bottom. Please reconstitute protein in deionized sterile water to a concentration of 0.1-1.0 mg/mL. We recommend to add 5-50% of glycerol (final concentration) and aliquot for long-term storage at -20°C/-80°C.

 Tel: 1-631-559-9269 1-516-512-3133

 Email: info@creative-biomart.com  Fax: 1-631-938-8127

 45-1 Ramsey Road, Shirley, NY 11967, USA

AA Sequence

MAWDLKVKMLGGNDFLVSVTNSMTVSELKKQIAQKIGVPAFQQRLAHQTAVLQDGL
TLSSLGLGPSSTVMLVVQNCSEPLSILVRNERGHSNIYEVFLTQTVDLTKKKVSQRE
QVHEDQFWLSFEGRPMEDEKELLGEYGLKPQCTVIKHLRLRGG

GENE INFORMATION**Gene Name**

[Isg15 ISG15 ubiquitin-like modifier \[Mus musculus \]](#)

Official Symbol

[ISG15](#)

Synonyms

ISG15; ISG15 ubiquitin-like modifier; ubiquitin-like protein ISG15; interferon-stimulated protein 15; ubiquitin cross-reactive protein; interferon-induced 15 kDa protein; interferon-induced 15-KDa protein; interferon-induced 17 kDa protein; interferon, alpha-inducible protein; interferon-stimulated protein (15 kDa); G1p2; IP17; Irfp; UCRP; IGI15; MGC18616; MGC103144; MGC130321;

Gene ID

[100038882](#)

mRNA Refseq

[NM_015783](#)

Protein Refseq

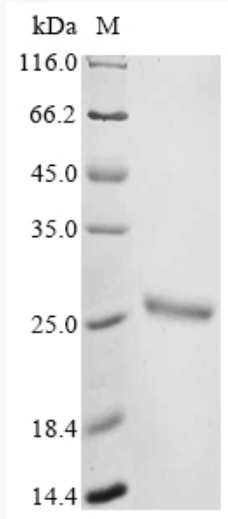
[NP_056598](#)

 Tel: 1-631-559-9269 1-516-512-3133

 Email: info@creative-biomart.com  Fax: 1-631-938-8127

 45-1 Ramsey Road, Shirley, NY 11967, USA

SDS-PAGE



 Tel: 1-631-559-9269 1-516-512-3133

 Email: info@creative-biomart.com  Fax: 1-631-938-8127

 45-1 Ramsey Road, Shirley, NY 11967, USA