

Recombinant Human ISG15 Protein, GST-tagged

Cat. No. ISG15-4606H **Lot. No.** (See product label)

SPECIFICATION

Product Overview	Human G1P2 full-length ORF (ENSP00000368699, 1 a.a. - 165 a.a.) recombinant protein with GST-tag at N-terminal.
Species	Human
Source	Wheat Germ
Description	ISG15 is a ubiquitin-like protein that becomes conjugated to many cellular proteins upon activation by interferon-alpha (IFNA; MIM 147660) and -beta (IFNB; MIM 147640) (Zhao et al., 2005 [PubMed 16009940]).[supplied by OMIM
Molecular Mass	44.3 kDa
AA Sequence	MGWDLTVKMLAGNEFQVSLSSSMSVSELKAQITQKIGVHAFQQRLAVHPSGVALQD RVPLASQGLGPGSTVLLVVDKCDPELSILVRNNGRSSTYEVRLTQTVAHLKQQVS GLEGVQDDLFWLTFEGKPLEDQLPLGEYGLKPLSTVFMNLRRLRGGGTEPGGRS
Applications	Enzyme-linked Immunoabsorbent Assay Western Blot (Recombinant protein) Antibody Production Protein Array
Notes	Best use within three months from the date of receipt of this protein.
Storage	Store at -80 centigrade. Aliquot to avoid repeated freezing and thawing.

 Tel: 1-631-559-9269 1-516-512-3133

 Email: info@creative-biomart.com  Fax: 1-631-938-8127

 45-1 Ramsey Road, Shirley, NY 11967, USA

Storage Buffer 50 mM Tris-HCl, 10 mM reduced Glutathione, pH=8.0 in the elution buffer.

GENE INFORMATION

Gene Name ISG15 ISG15 ubiquitin-like modifier [Homo sapiens]

Official Symbol ISG15

Synonyms ISG15; ISG15 ubiquitin-like modifier; G1P2, interferon, alpha inducible protein (clone IFI 15K); ubiquitin-like protein ISG15; IFI15; UCRP; ubiquitin cross-reactive protein; interferon-induced 15 kDa protein; interferon-induced 17 kDa protein; interferon-stimulated protein, 15 kDa; interferon-induced 17-kDa/15-kDa protein; interferon, alpha-inducible protein (clone IFI-15K); G1P2; IP17; hUCRP;

Gene ID 9636

mRNA Refseq NM_005101

Protein Refseq NP_005092

MIM 147571

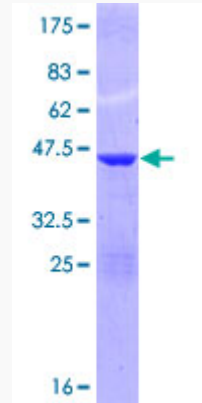
UniProt ID P05161

 Tel: 1-631-559-9269 1-516-512-3133

 Email: info@creative-biomart.com  Fax: 1-631-938-8127

 45-1 Ramsey Road, Shirley, NY 11967, USA

**Quality Control
Testing**



12.5% SDS-PAGE Stained with Coomassie Blue.

 Tel: 1-631-559-9269 1-516-512-3133

 Email: info@creative-biomart.com  Fax: 1-631-938-8127

 45-1 Ramsey Road, Shirley, NY 11967, USA