

Recombinant Full Length Human ISG15 Protein, C-Flag-tagged

Cat. No. ISG15-931HFL Lot. No. (See product label)

SPECIFICATION

Product Overview	Recombinant Full Length Human ISG15 Protein, fused to Flag-tag at C-terminus, was expressed in Mammalian cells.
Species	Human
Source	Mammalian Cells
Description	The protein encoded by this gene is a ubiquitin-like protein that is conjugated to intracellular target proteins upon activation by interferon-alpha and interferon-beta. Several functions have been ascribed to the encoded protein, including chemotactic activity towards neutrophils, direction of ligated target proteins to intermediate filaments, cell-to-cell signaling, and antiviral activity during viral infections. While conjugates of this protein have been found to be noncovalently attached to intermediate filaments, this protein is sometimes secreted.
Form	25 mM Tris HCl, pH 7.3, 100 mM glycine, 10% glycerol.
Molecular Mass	17.7 kDa
AA Sequence	MGWDLTVKMLAGNEFQVSLSSSMSVSELKAQITQKIGVHAFQQRLAVHPSGVALQD RVPLASQGLGPGST VLLVVDKCDLPLNLRNNGRSSTYEVRLTQTVAHLKQQVS GLEGVQDDLFWLTFFEGKPLEDQLPLGEY GLKPLSTVFMNLRRLRGGGTEPGGRSTRTRPLEQKLISEEDLAANDILDYKDDDDKV
Purity	> 80% as determined by SDS-PAGE and Coomassie blue staining.

 Tel: 1-631-559-9269 1-516-512-3133

 Email: info@creative-biomart.com  Fax: 1-631-938-8127

 45-1 Ramsey Road, Shirley, NY 11967, USA

Stability	Stable for 12 months from the date of receipt of the product under proper storage and handling conditions. Avoid repeated freeze-thaw cycles.
Storage	Store at -80 centigrade.
Concentration	>50 ug/mL as determined by microplate BCA method.
Preparation	Recombinant protein was captured through anti-DDK affinity column followed by conventional chromatography steps.
Protein Families	Druggable Genome, Secreted Protein
Protein Pathways	RIG-I-like receptor signaling pathway
Full Length	Full L.

GENE INFORMATION

Gene Name	ISG15 ISG15 ubiquitin like modifier [Homo sapiens (human)]
Official Symbol	ISG15
Synonyms	G1P2; IP17; UCRP; IFI15; IMD38; hUCRP
Gene ID	9636
mRNA Refseq	NM_005101.4
Protein Refseq	NP_005092.1
MIM	147571

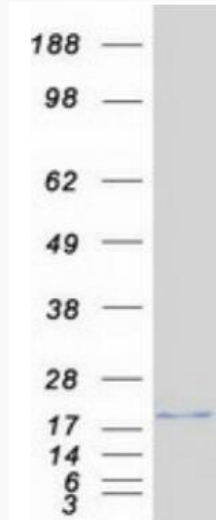
 Tel: 1-631-559-9269 1-516-512-3133

 Email: info@creative-biomart.com  Fax: 1-631-938-8127

 45-1 Ramsey Road, Shirley, NY 11967, USA

UniProt ID

P05161



Coomassie blue staining of purified ISG15 protein.

 Tel: 1-631-559-9269 1-516-512-3133

 Email: info@creative-biomart.com  Fax: 1-631-938-8127

 45-1 Ramsey Road, Shirley, NY 11967, USA