

Recombinant Human ISL1 Protein (Met1-Ala349), N-His tagged

Cat. No. ISL1-3120H Lot. No. (See product label)

SPECIFICATION

Product Overview	Recombinant human ISL1 (Met1-Ala349) protein fused with the N-His tag was expressed in E. coli.
Species	Human
Source	E.coli
ProteinLength	Met1-Ala349
Molecular Mass	41.35 kDa
Purity	>90 % as determined by SDS-PAGE.
Notes	For research use only.
Storage	Use a manual defrost freezer and avoid repeated freeze thaw cycles. Store at 2 to 8 centigrade for one week. Store at -20 to -80 centigrade for twelve months from the date of receipt.
Storage Buffer	0.01M PBS, pH 7.4, 0.02 % NLS
Reconstitution	Reconstitute in sterile water for a stock solution.
Shipping	In general, proteins are provided as lyophilized powder/frozen liquid. They are shipped out with dry ice/blue ice unless customers require otherwise.

 Tel: 1-631-559-9269 1-516-512-3133

 Email: info@creative-biomart.com  Fax: 1-631-938-8127

 45-1 Ramsey Road, Shirley, NY 11967, USA

GENE INFORMATION

Gene Name ISL1 ISL LIM homeobox 1 [Homo sapiens (human)]

Official Symbol ISL1

Synonyms ISL1; ISL LIM homeobox 1; ISL1 transcription factor, LIM/homeodomain, (islet 1); insulin gene enhancer protein ISL-1; Isl 1; ISLET1; islet-1; ISL1 transcription factor, LIM/homeodomain; Isl-1;

Gene ID 3670

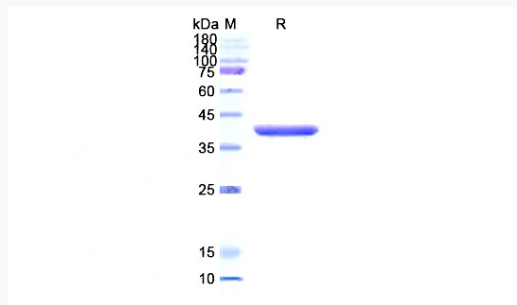
mRNA Refseq NM_002202

Protein Refseq NP_002193

MIM 600366

UniProt ID P61371

SDS-PAGE



 Tel: 1-631-559-9269 1-516-512-3133

 Email: info@creative-biomart.com  Fax: 1-631-938-8127

 45-1 Ramsey Road, Shirley, NY 11967, USA