

Recombinant Human ISL1 Protein, GST-tagged

Cat. No. ISL1-5015H Lot. No. (See product label)

SPECIFICATION

Product Overview	Human ISL1 full-length ORF (NP_002193.1, 1 a.a. - 346 a.a.) recombinant protein with GST-tag at N-terminal.
Species	Human
Source	Wheat Germ
Description	This gene encodes a member of the LIM/homeodomain family of transcription factors. The encoded protein binds to the enhancer region of the insulin gene, among others, and may play an important role in regulating insulin gene expression. The encoded protein is central to the development of pancreatic cell lineages and may also be required for motor neuron generation. Mutations in this gene have been associated with maturity-onset diabetes of the young. [provided by RefSeq]
Molecular Mass	65.1 kDa
AA Sequence	MGDPPKKRLISLCVGCNQIHDQYILRVSPDLEWHAACLKCAECNQYLDESCTCF VRDGKTYCKRDYIRLYGIKCAKCSIGFSKNDFVMRARSKVYHIECFRCVACSRQLIPG DEFALREDGLFCRADHDVVERASLGAGDPLSPLHPARPLQMAAEPISARQPALRPH VHKQPEKTTRVRTVLNEKQLHLRRCYAAANPRPDALMKEQLVEMTGLSPRVIRVWF QNKRCCKDKRSIMMKQLQQQPNDKTNIQGMTGTPMVAASPERHDGGLQANPVE VQSYQPPWKVLSDFALQSDIDQPAFQQLVNFSEGGPGSNSTGSEVASMSSQLPDT PNSMVASPIEA
Applications	Enzyme-linked Immunoabsorbent Assay

 Tel: 1-631-559-9269 1-516-512-3133

 Email: info@creative-biomart.com  Fax: 1-631-938-8127

 45-1 Ramsey Road, Shirley, NY 11967, USA

Western Blot (Recombinant protein)
 Antibody Production
 Protein Array

Notes	Best use within three months from the date of receipt of this protein.
Storage	Store at -80 centigrade. Aliquot to avoid repeated freezing and thawing.
Storage Buffer	50 mM Tris-HCl, 10 mM reduced Glutathione, pH=8.0 in the elution buffer.

GENE INFORMATION

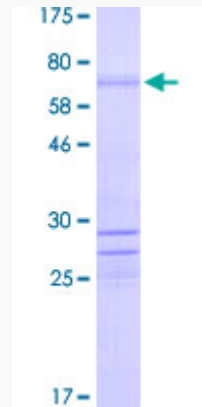
Gene Name	ISL1 ISL LIM homeobox 1 [Homo sapiens]
Official Symbol	ISL1
Synonyms	ISL1; ISL LIM homeobox 1; ISL1 transcription factor, LIM/homeodomain, (islet 1); insulin gene enhancer protein ISL-1; Isl 1; ISLET1; islet-1; ISL1 transcription factor, LIM/homeodomain; Isl-1;
Gene ID	3670
mRNA Refseq	NM_002202
Protein Refseq	NP_002193
MIM	600366
UniProt ID	P61371

 Tel: 1-631-559-9269 1-516-512-3133

 Email: info@creative-biomart.com  Fax: 1-631-938-8127

 45-1 Ramsey Road, Shirley, NY 11967, USA

**Quality Control
Testing**



12.5% SDS-PAGE Stained with Coomassie Blue

 Tel: 1-631-559-9269 1-516-512-3133

 Email: info@creative-biomart.com  Fax: 1-631-938-8127

 45-1 Ramsey Road, Shirley, NY 11967, USA