

Recombinant Human ISL2 Protein, GST-tagged

Cat. No. ISL2-5013H **Lot. No.** (See product label)

SPECIFICATION

Product Overview	Human ISL2 full-length ORF (NP_665804.1, 1 a.a. - 359 a.a.) recombinant protein with GST-tag at N-terminal.
Species	Human
Source	Wheat Germ
Description	ISL2 (ISL LIM Homeobox 2) is a Protein Coding gene. Among its related pathways are Neural Stem Cell Differentiation Pathways and Lineage-specific Markers. GO annotations related to this gene include sequence-specific DNA binding. An important paralog of this gene is ISL1.
Molecular Mass	66.2 kDa
AA Sequence	MVDIIFHYPLGAMGDHSHKKKPGTAMCVGCGSQIHDQFILRVSPDLEWHAACKCA ECSQYLDETCTCFVRDGKTYCKRDYVRLFGIKCAKQVGFSSSDLVMRARDSVYHI ECFRCSVCSRQLLPGDEFSLREHELLCRADHGLLLERAAAGSPRSPGPLPGARGLH LPDAGSGRQPALRPHVHKQTEKTRVRTVLNEKQLHLRRCYAAANPRPDALMKEQL VEMTGLSPRVIRVWFQNKRCDDKKSILMKQLQQQHSQDTSLSLQGLTGTPLVAGSP IRHENAQQGSAVEVQTYQPPWKALSEFALQSDLDQPAFQQLVSFSESGSLGNSSGS DVTSLSSQLPDTPNMVPSPVET
Applications	Enzyme-linked Immunoabsorbent Assay Western Blot (Recombinant protein) Antibody Production

 Tel: 1-631-559-9269 1-516-512-3133

 Email: info@creative-biomart.com  Fax: 1-631-938-8127

 45-1 Ramsey Road, Shirley, NY 11967, USA

Protein Array

Notes	Best use within three months from the date of receipt of this protein.
Storage	Store at -80 centigrade. Aliquot to avoid repeated freezing and thawing.
Storage Buffer	50 mM Tris-HCl, 10 mM reduced Glutathione, pH=8.0 in the elution buffer.

GENE INFORMATION

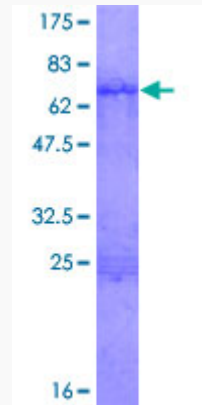
Gene Name	ISL2 ISL LIM homeobox 2 [Homo sapiens]
Official Symbol	ISL2
Synonyms	ISL2; ISL LIM homeobox 2; ISL2 transcription factor, LIM/homeodomain, (islet 2); insulin gene enhancer protein ISL-2; FLJ10160; islet-2; ISL2 transcription factor, LIM/homeodomain, (islet-2);
Gene ID	64843
mRNA Refseq	NM_145805
Protein Refseq	NP_665804
MIM	609481
UniProt ID	Q96A47

 Tel: 1-631-559-9269 1-516-512-3133

 Email: info@creative-biomart.com  Fax: 1-631-938-8127

 45-1 Ramsey Road, Shirley, NY 11967, USA

**Quality Control
Testing**



12.5% SDS-PAGE Stained with Coomassie Blue

 Tel: 1-631-559-9269 1-516-512-3133

 Email: info@creative-biomart.com  Fax: 1-631-938-8127

 45-1 Ramsey Road, Shirley, NY 11967, USA