

Recombinant Human ISM1 Protein, His&GST-tagged

Cat. No. ISM1-1693H Lot. No. (See product label)

SPECIFICATION

Product Overview	Recombinant Human ISM1 Protein (Ala30-Tyr464) with N-His&GST tag was expressed in E. coli.
Species	Human
Source	E.coli
ProteinLength	Ala30-Tyr464
Description	Predicted to be involved in negative regulation of angiogenesis. Predicted to be located in extracellular region.
Form	Freeze-dried powder
Molecular Mass	Predicted Molecular Mass: 79 kDa Accurate Molecular Mass: 89 kDa
Purity	> 90%
Applications	Positive Control; Immunogen; SDS-PAGE; WB.
Stability	The thermal stability is described by the loss rate. The loss rate was determined by accelerated thermal degradation test, that is, incubate the protein at 37 centigrade for 48h, and no obvious degradation and precipitation were observed. The loss rate is less than 5% within the expiration date under appropriate storage condition.

 Tel: 1-631-559-9269 1-516-512-3133

 Email: info@creative-biomart.com  Fax: 1-631-938-8127

 45-1 Ramsey Road, Shirley, NY 11967, USA

Storage	Avoid repeated freeze/thaw cycles. Store at 2-8 centigrade for one month. Aliquot and store at -80 centigrade for 12 months.
Storage Buffer	20mM Tris, 150mM NaCl, pH8.0, containing 1mM EDTA, 1mM DTT, 0.01% SKL, 5% Trehalose and Proclin300.
Reconstitution	Reconstitute in 20mM Tris, 150mM NaCl (pH8.0) to a concentration of 0.1-1.0 mg/mL. Do not vortex.

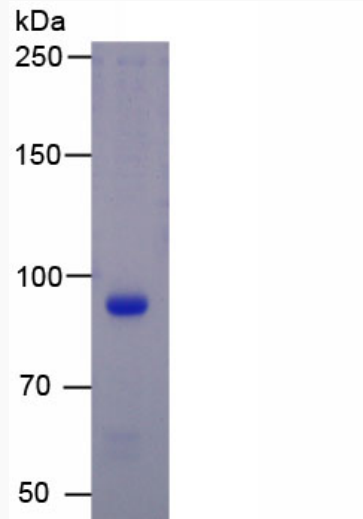
GENE INFORMATION

Gene Name	ISM1 isthmin 1 homolog (zebrafish) [Homo sapiens (human)]
Official Symbol	ISM1
Synonyms	ISM1; isthmin 1 homolog (zebrafish); C20orf82, chromosome 20 open reading frame 82; isthmin-1; bA149I18.1; ISM; Isthmin; C20orf82; dJ1077I2.1;
Gene ID	140862
mRNA Refseq	NM_080826
Protein Refseq	NP_543016
MIM	615793
UniProt ID	B1AKI9

 Tel: 1-631-559-9269 1-516-512-3133

 Email: info@creative-biomart.com  Fax: 1-631-938-8127

 45-1 Ramsey Road, Shirley, NY 11967, USA



Tel: 1-631-559-9269 1-516-512-3133

Email: info@creative-biomart.com Fax: 1-631-938-8127

45-1 Ramsey Road, Shirley, NY 11967, USA