

# Recombinant Full Length Human ISM1 Protein, C-Flag-tagged

Cat. No. ISM1-1921HFL Lot. No. (See product label)

## SPECIFICATION

<b>Product Overview</b>	Recombinant Full Length Human ISM1 Protein, fused to Flag-tag at C-terminus, was expressed in Mammalian cells.
<b>Species</b>	Human
<b>Source</b>	Mammalian Cells
<b>Description</b>	Predicted to be involved in negative regulation of angiogenesis. Predicted to be located in extracellular region.
<b>Form</b>	25 mM Tris HCl, pH 7.3, 100 mM glycine, 10% glycerol.
<b>Molecular Mass</b>	51.9 kDa
<b>AA Sequence</b>	MVRLAAELLLLLGLLLLLTLHITVLRGSGAADGPDAAAGNASQAQLQNNLNVGSDTTS ETSFSLSKEAPRE HLDHQA AHQPFRPRFRQETGHPSLQRDFPRSFLLDLPNFPDL SKADINGQNPNIQVTIEVVDGPDSEAD KDQHPENKPSWSVPSDWRAWWQRSLSL ARANSGDQDYKYDSTSDDSNFLNPPRGWDHTAPGHRTFETKD QPEYDSTDGEGD WSLWSVCSVTCGNGNQKRTRSCGYACTATESRTC DRPNCPGIEDTFRTAATEVSL LAG SEEFNATKLFVDTDCERWMSCKSEFLKMYMHKVMNDLPSCPCSYPTEVAY STADIFDRIKRKDFRWKD ASGPKEKLEIYKPTARYCIRMSLSLESTTLAAQHCCYGD NMQLITRGKGAGTPNLISTEFS AELHYKVDV LPWIICKGDWSRYNEARPPNNGQKC TESPSDEDYIKQFQEAREY SGPTRTRRLEQKLISEEDLAANDILDYKDDDDKV
<b>Purity</b>	> 80% as determined by SDS-PAGE and Coomassie blue staining.

 Tel: 1-631-559-9269 1-516-512-3133

 Email: [info@creative-biomart.com](mailto:info@creative-biomart.com)  Fax: 1-631-938-8127

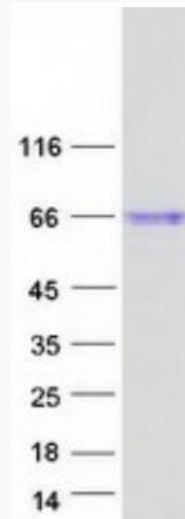
 45-1 Ramsey Road, Shirley, NY 11967, USA

<b>Stability</b>	Stable for 12 months from the date of receipt of the product under proper storage and handling conditions. Avoid repeated freeze-thaw cycles.
<b>Storage</b>	Store at -80 centigrade.
<b>Concentration</b>	>50 ug/mL as determined by microplate BCA method.
<b>Preparation</b>	Recombinant protein was captured through anti-DDK affinity column followed by conventional chromatography steps.
<b>Full Length</b>	Full L.
<b>GENE INFORMATION</b>	
<b>Gene Name</b>	ISM1 isthmin 1 [ Homo sapiens (human) ]
<b>Official Symbol</b>	ISM1
<b>Synonyms</b>	ISM; Isthmin; C20orf82; bA149I18.1; dJ1077I2.1
<b>Gene ID</b>	140862
<b>mRNA Refseq</b>	NM_080826.2
<b>Protein Refseq</b>	NP_543016.1
<b>MIM</b>	615793
<b>UniProt ID</b>	B1AKI9

 Tel: 1-631-559-9269 1-516-512-3133

 Email: [info@creative-biomart.com](mailto:info@creative-biomart.com)  Fax: 1-631-938-8127

 45-1 Ramsey Road, Shirley, NY 11967, USA



Coomassie blue staining of purified ISM1 protein.

Tel: 1-631-559-9269 1-516-512-3133

Email: [info@creative-biomart.com](mailto:info@creative-biomart.com) Fax: 1-631-938-8127

45-1 Ramsey Road, Shirley, NY 11967, USA