

Recombinant Human ISM1 Protein (30-164 aa), His-SUMO-Myc-tagged

Cat. No. ISM1-2311H Lot. No. (See product label)

SPECIFICATION

Product Overview Recombinant Human ISM1 Protein (30-164 aa) is produced by E. coli expression system. This protein is fused with a 10xHis-SUMO tag at the N-terminal and a Myc tag at the C-terminal. Protein Description: Full Length of Mature Protein.

Species Human

Source E.coli

ProteinLength 30-164 aa

Description Acts as an angiogenesis inhibitor.

Form Tris-based buffer,50% glycerol

Molecular Mass 69.1 kDa

AA Sequence

```
ADGPDAAAGNASQAQLQNNLNVGSDTTSETSFSLKEAPREHLDHQAAHQPFPRP
RFRQETGHPSLQRDFPRSFLLDLPNFPDLSKADINGQNPNIQVTIEVVDGPDSEADK
DQHPENKPSWSVPSPDWRAWWRSLARANSQDQDYKYDSTSDSNFLNPPR
GWDHTAPGHRFTFETKDQPEYDSTDGEGDWSLWSVCSVTTCGNGNQKRTRSCGYA
CTATESRTRCDRPNCPGIEDTFRTAATEVSLLAGSEEFNATKLFVDTDSCERWMSC
KSEFLKKYMHKVMNDLPSCPCSYPTVAYSTADIFDRIKRKDFRW kDaSGPKEKLEI
YKPTARYCIRSMLSLESTTLAAQHCCYGDNMQLITRGKGAGTPNLISTEFSAELHYK
VDVLPWIICKGDWSRYNEARPPNNGQKCTESPSDEDYIKQFQEAREY
```

 Tel: 1-631-559-9269 1-516-512-3133

 Email: info@creative-biomart.com  Fax: 1-631-938-8127

 45-1 Ramsey Road, Shirley, NY 11967, USA

Purity	> 85% as determined by SDS-PAGE.
Notes	Repeated freezing and thawing is not recommended. Store working aliquots at 4 centigrade for up to one week.
Storage	The shelf life is related to many factors, storage state, buffer ingredients, storage temperature and the stability of the protein itself. Generally, the shelf life of liquid form is 6 months at -20 centigrade/-80 centigrade. The shelf life of lyophilized form is 12 months at -20 centigrade/-80 centigrade.
Concentration	A hardcopy of COA will be sent along with the products. Please refer to it for detailed information.

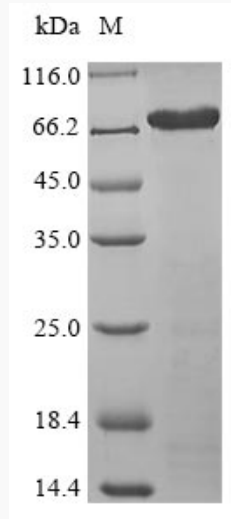
GENE INFORMATION

Gene Name	ISM1 isthmin 1 homolog (zebrafish) [Homo sapiens]
Official Symbol	ISM1
Synonyms	ISM1; isthmin 1 homolog (zebrafish); isthmin-1; bA149I18.1; ISM; Isthmin; C20orf82; dJ1077I2.1;
Gene ID	140862
mRNA Refseq	NM_080826
Protein Refseq	NP_543016
UniProt ID	B1AKI9

 Tel: 1-631-559-9269 1-516-512-3133

 Email: info@creative-biomart.com  Fax: 1-631-938-8127

 45-1 Ramsey Road, Shirley, NY 11967, USA



(Tris-Glycine gel) Discontinuous SDS-PAGE (reduced) with 5% enrichment gel and 15% separation gel.

 Tel: 1-631-559-9269 1-516-512-3133

 Email: info@creative-biomart.com  Fax: 1-631-938-8127

 45-1 Ramsey Road, Shirley, NY 11967, USA