

Recombinant Human ISM1 Protein, Myc/DDK-tagged, C13 and N15-labeled

Cat. No. ISM1-4210H Lot. No. (See product label)

SPECIFICATION

Product Overview

ISM1 MS Standard C13 and N15-labeled recombinant protein (NP_543016) with a C-terminal MYC/DDK tag, was expressed in HEK293 cells.

Species

Human

Source

HEK293

Description

ISM1 (Isthmin 1) is a Protein Coding gene. Diseases associated with ISM1 include Indolent Systemic Mastocytosis and Hematocele Of Tunica Vaginalis Testis. An important paralog of this gene is THBS1.

Molecular Mass

51.9 kDa

AA Sequence

MVRLAAELLLLLLGLLLLTLHITVLRGSGAADGPDAAAGNASQAQLQNNLNVGSDTTS
 ETSFSLSKEAPREHLDHQAAHQPFPRPRFRQETGHPSLQRDFPRSFLLDLPNFPDL
 SKADINGQNPNIQVTIEVVDGPDSEADKDQHPENKPSWSVPSPDWRAWWQRSLSL
 ARANSGDQDYKYDSTSDDSNFLNPPRGWDHTAPGHRTFETKDQPEYDSTDGEGD
 WLSWSVCSVTCGNQKRTRSCGYACTATESRTC DRPNCPGIEDTFRTAATEVSL
 LAGSEEFNATKLFVDTDSCERWMSCKSEFLKKYMHKVMNDLPSCPCSYPTAVAY
 STADIFDRIKRKDFRWK DASGPKEKLEIYKPTARYCIRSMLSLESTTLAAQHCCYGDN
 MQLITRGKGAGTPNLISTEFS AELHYKVDVLPWIICKGDWSRYNEARPPNNGQKCTE
 SPSDEDYIKQFQEAREYSGPTRTRRLEQKLISEEDLAANDILDYKDDDDKV

Purity

> 80% as determined by SDS-PAGE and Coomassie blue staining

 Tel: 1-631-559-9269 1-516-512-3133

 Email: info@creative-biomart.com  Fax: 1-631-938-8127

 45-1 Ramsey Road, Shirley, NY 11967, USA



Stability	Stable for 3 months from receipt of products under proper storage and handling conditions.
Storage	Store at -80 centigrade. Avoid repeated freeze-thaw cycles.
Concentration	50 µg/mL as determined by BCA
Storage Buffer	100 mM glycine, 25 mM Tris-HCl, pH 7.3.

GENE INFORMATION

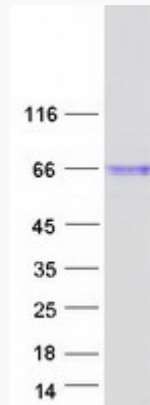
Gene Name	ISM1 isthmin 1 [Homo sapiens (human)]
Official Symbol	ISM1
Synonyms	ISM1; isthmin 1 homolog (zebrafish); C20orf82, chromosome 20 open reading frame 82; isthmin-1; bA149I18.1; ISM; Isthmin; C20orf82; dJ1077I2.1;
Gene ID	140862
mRNA Refseq	NM_080826
Protein Refseq	NP_543016
MIM	615793
UniProt ID	B1AKI9

Tel: 1-631-559-9269 1-516-512-3133

Email: info@creative-biomart.com Fax: 1-631-938-8127

45-1 Ramsey Road, Shirley, NY 11967, USA

SDS-PAGE



 Tel: 1-631-559-9269 1-516-512-3133

 Email: info@creative-biomart.com  Fax: 1-631-938-8127

 45-1 Ramsey Road, Shirley, NY 11967, USA