

## Recombinant Human ISOC2 Protein, GST-tagged

Cat. No. ISOC2-5010H Lot. No. (See product label)

### SPECIFICATION

|                         |  |
|-------------------------|--|
| <b>Product Overview</b> | Human ISOC2 full-length ORF ( AAH17344.1, 1 a.a. - 205 a.a.) recombinant protein with GST-tag at N-terminal.   |
| <b>Species</b>          | Human  |
| <b>Source</b>           | Wheat Germ   |
| <b>Description</b>      | ISOC2 (Isochorismatase Domain Containing 2) is a Protein Coding gene. An important paralog of this gene is ISOC1.  |
| <b>Molecular Mass</b>   | 48.7 kDa   |
| <b>AA Sequence</b>      | MAAARPSLGRVLPGSSVFLCDMQEKFRHNIAYFPQIVSVAARMLKVARLLEVPVML<br>TEQYPQGLGPTVPELGTGLRPLAKTCFSMVPALQQELDSRPQLRSVLLCGIEAQA<br>CILNTTLDLLDRGLQVHVVDACSSRSQVDRLVALARMRQSGAFLSTSEGLILQLVG<br>DAVHPQFKEIQKLIKEPAPDSGLLGLFQGQNSLLH |
| <b>Applications</b>     | Enzyme-linked Immunoabsorbent Assay<br>Western Blot (Recombinant protein)<br>Antibody Production<br>Protein Array  |
| <b>Notes</b>            | Best use within three months from the date of receipt of this protein.   |
| <b>Storage</b>          | Store at -80 centigrade. Aliquot to avoid repeated freezing and thawing.   |

 Tel: 1-631-559-9269 1-516-512-3133

 Email: [info@creative-biomart.com](mailto:info@creative-biomart.com)  Fax: 1-631-938-8127

 45-1 Ramsey Road, Shirley, NY 11967, USA

**Storage Buffer** 50 mM Tris-HCl, 10 mM reduced Glutathione, pH=8.0 in the elution buffer.

## GENE INFORMATION

**Gene Name** ISOC2 isochorismatase domain containing 2 [ Homo sapiens ]

**Official Symbol** ISOC2

**Synonyms** ISOC2; isochorismatase domain containing 2; isochorismatase domain-containing protein 2, mitochondrial; FLJ23469; FLJ18582;

**Gene ID** 79763

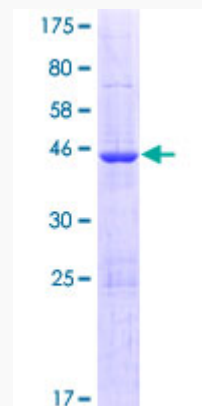
**mRNA Refseq** NM\_001136201

**Protein Refseq** NP\_001129673

**MIM** 612928

**UniProt ID** Q96AB3

**Quality Control Testing**



 Tel: 1-631-559-9269 1-516-512-3133

 Email: [info@creative-biomart.com](mailto:info@creative-biomart.com)  Fax: 1-631-938-8127

 45-1 Ramsey Road, Shirley, NY 11967, USA



12.5% SDS-PAGE Stained with Coomassie Blue

 Tel: 1-631-559-9269 1-516-512-3133

 Email: [info@creative-biomart.com](mailto:info@creative-biomart.com)  Fax: 1-631-938-8127

 45-1 Ramsey Road, Shirley, NY 11967, USA