

Recombinant Human ISX Protein (1-245 aa), His-SUMO-tagged

Cat. No. ISX-587H Lot. No. (See product label)

SPECIFICATION

Product Overview	Recombinant Human ISX Protein (1-245 aa) is produced by E. coli expression system. This protein is fused with a 6xHis-SUMO tag at the N-terminal. Research Area: Epigenetics and Nuclear Signaling. Protein Description: Full Length.
Species	Human
Source	E.coli
ProteinLength	1-245 aa
Description	Transcription factor that regulates gene expression in intestine. May participate in vitamin A metabolism most likely by regulating BCO1 expression in the intestine.
Form	Tris-based buffer, 50% glycerol
Molecular Mass	43.0 kDa
AA Sequence	MCAEVGPALCRGMERNLSLGCCEAPKKLSLSFSIEAILKRPARRSDMDRPEGPGEEG PGEAAASGSGLEKPPKDQPQEGRKSRRVRTTFTTEQLHELEKIFHFTHYPDVHIRS QLAARINLPEARVQIWFQNQRAKWRKQEKIGNLGAPQQLSEASVALPTNLDVAGPT WTSTALRRLAPPTSCCPAQDQLASAWFPAWITLLPAHPWETQPVPGLPIHQTCIPV LCILPPPHPKWGSICATST
Purity	> 90% as determined by SDS-PAGE.

 Tel: 1-631-559-9269 1-516-512-3133

 Email: info@creative-biomart.com  Fax: 1-631-938-8127

 45-1 Ramsey Road, Shirley, NY 11967, USA

Notes	Repeated freezing and thawing is not recommended. Store working aliquots at 4 centigrade for up to one week.
Storage	The shelf life is related to many factors, storage state, buffer ingredients, storage temperature and the stability of the protein itself. Generally, the shelf life of liquid form is 6 months at -20 centigrade/-80 centigrade. The shelf life of lyophilized form is 12 months at -20 centigrade/-80 centigrade.
Concentration	A hardcopy of COA with concentration instruction is sent along with the products.

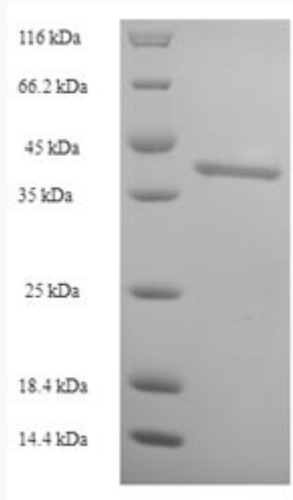
GENE INFORMATION

Gene Name	ISX intestine-specific homeobox [Homo sapiens]
Official Symbol	ISX
Synonyms	ISX; RAXLX; RAX-like homeobox; Pix-1; MGC138417; DKFZp781N2395;
Gene ID	91464
mRNA Refseq	NM_001008494
Protein Refseq	NP_001008494
MIM	612019
UniProt ID	Q2M1V0

 Tel: 1-631-559-9269 1-516-512-3133

 Email: info@creative-biomart.com  Fax: 1-631-938-8127

 45-1 Ramsey Road, Shirley, NY 11967, USA



(Tris-Glycine gel) Discontinuous SDS-PAGE (reduced) with 5% enrichment gel and 15% separation gel.

 Tel: 1-631-559-9269 1-516-512-3133

 Email: info@creative-biomart.com  Fax: 1-631-938-8127

 45-1 Ramsey Road, Shirley, NY 11967, USA