

# Recombinant Human ISY1 Protein, Myc/DDK-tagged, C13 and N15-labeled

**Cat. No.** ISY1-4682H    **Lot. No.** (See product label)

## SPECIFICATION

<b>Product Overview</b>	ISY1 MS Standard C13 and N15-labeled recombinant protein (NP_065752) with a C-terminal MYC/DDK tag, was expressed in HEK293 cells.
<b>Species</b>	Human
<b>Source</b>	HEK293
<b>Description</b>	ISY1 (ISY1 Splicing Factor Homolog) is a Protein Coding gene. Among its related pathways are Transcription-Coupled Nucleotide Excision Repair (TC-NER) and Gene Expression. An important paralog of this gene is ISY1-RAB43.
<b>Molecular Mass</b>	33 kDa
<b>AA Sequence</b>	MARNAEKAMTALARFRQAQLEEGKVKERRPFLASECTELPKAEKWRRQIIGEISKKV AQIQNAGLGEFRIRDLNDEINKLLREKGHWEVRIKELGGPDYGKVGPKMLDHEGKEV PGNRGYKYFGAAKDLPGVRELFEKEPLPPPRKTRAEMLKAIDFEYYGYLDEDDGVIV PLEQEYEEKLRAELVEKWKAEREARLARGEKEEEEEEEEEINIYAVTEEESDEEGSQ EKGGDDSQQKFIAHVPVPSQQEIEEALVRRKKMELLQKYASETTLQAQSEEARRLLG YTRTRPLEQKLISEEDLAANDILDYKDDDDKV
<b>Purity</b>	> 80% as determined by SDS-PAGE and Coomassie blue staining
<b>Stability</b>	Stable for 3 months from receipt of products under proper storage and handling conditions.

 Tel: 1-631-559-9269    1-516-512-3133

 Email: [info@creative-biomart.com](mailto:info@creative-biomart.com)     Fax: 1-631-938-8127

 45-1 Ramsey Road, Shirley, NY 11967, USA

<b>Storage</b>	Store at -80 centigrade. Avoid repeated freeze-thaw cycles.
----------------	---

<b>Concentration</b>	50 µg/mL as determined by BCA
----------------------	-------------------------------

<b>Storage Buffer</b>	100 mM glycine, 25 mM Tris-HCl, pH 7.3.
-----------------------	---

## GENE INFORMATION

<b>Gene Name</b>	ISY1 ISY1 splicing factor homolog [ Homo sapiens (human) ]
------------------	--

<b>Official Symbol</b>	ISY1
------------------------	------

<b>Synonyms</b>	ISY1; ISY1 splicing factor homolog; FSAP33; pre-mRNA-splicing factor ISY1 homolog; functional spliceosome-associated protein 33
-----------------	---

<b>Gene ID</b>	57461
----------------	-------

<b>mRNA Refseq</b>	NM_020701
--------------------	-----------

<b>Protein Refseq</b>	NP_065752
-----------------------	-----------

<b>MIM</b>	612764
------------	--------

<b>UniProt ID</b>	Q9ULR0
-------------------	--------

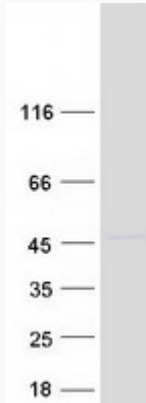
 Tel: 1-631-559-9269 1-516-512-3133

 Email: [info@creative-biomart.com](mailto:info@creative-biomart.com)  Fax: 1-631-938-8127

 45-1 Ramsey Road, Shirley, NY 11967, USA



SDS-PAGE



Tel: 1-631-559-9269 1-516-512-3133

Email: [info@creative-biomart.com](mailto:info@creative-biomart.com) Fax: 1-631-938-8127

45-1 Ramsey Road, Shirley, NY 11967, USA