

Recombinant Human ISY1 Protein, GST-tagged

Cat. No. ISY1-5007H **Lot. No.** (See product label)

SPECIFICATION

Product Overview	Human ISY1 full-length ORF (NP_065752.1, 1 a.a. - 285 a.a.) recombinant protein with GST-tag at N-terminal.
Species	Human
Source	Wheat Germ
Description	ISY1 (ISY1 Splicing Factor Homolog) is a Protein Coding gene. Among its related pathways are mRNA Splicing - Major Pathway and Transcription-Coupled Nucleotide Excision Repair (TC-NER). GO annotations related to this gene include poly(A) RNA binding. An important paralog of this gene is ISY1-RAB43.
Molecular Mass	59.4 kDa
AA Sequence	MARNAEKAMTALARFRQAQLEEGKVKERRPFLASECTELPKAEKWRRQIIGEISKKV AQIQNAGLGEFRIRDLNDEINKLLREKGHWEVRIKELGGPDYGKVGPKMLDHEGKEV PGNRGYKYFGAAKDLPGVRELFEKEPLPPPRKTRAEMLKAIDFEYYGYLDEDDGVIV PLEQEYEEKKLRAELVEKWKAEREARLARGEKEEEEEEEEEINIYAVTEEESDEEGSQ EKGDDDSQQKFIAHVPVPSQQEIEEALVRRKMKMELLQKYASET LQAQSEEARRLLG Y
Applications	Enzyme-linked Immunoabsorbent Assay Western Blot (Recombinant protein) Antibody Production Protein Array

 Tel: 1-631-559-9269 1-516-512-3133

 Email: info@creative-biomart.com  Fax: 1-631-938-8127

 45-1 Ramsey Road, Shirley, NY 11967, USA

Notes	Best use within three months from the date of receipt of this protein.
Storage	Store at -80 centigrade. Aliquot to avoid repeated freezing and thawing.
Storage Buffer	50 mM Tris-HCl, 10 mM reduced Glutathione, pH=8.0 in the elution buffer.

GENE INFORMATION

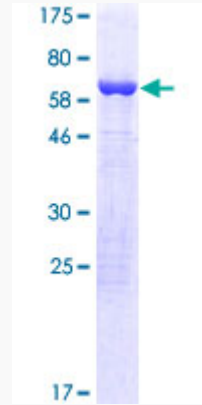
Gene Name	ISY1 ISY1 splicing factor homolog [Homo sapiens (human)]
Official Symbol	ISY1
Synonyms	ISY1; ISY1 splicing factor homolog; FSAP33; pre-mRNA-splicing factor ISY1 homolog; functional spliceosome-associated protein 33
Gene ID	57461
mRNA Refseq	NM_001199469
Protein Refseq	NP_001186398
MIM	612764
UniProt ID	Q9ULR0

 Tel: 1-631-559-9269 1-516-512-3133

 Email: info@creative-biomart.com  Fax: 1-631-938-8127

 45-1 Ramsey Road, Shirley, NY 11967, USA

**Quality Control
Testing**



12.5% SDS-PAGE Stained with Coomassie Blue

 Tel: 1-631-559-9269 1-516-512-3133

 Email: info@creative-biomart.com  Fax: 1-631-938-8127

 45-1 Ramsey Road, Shirley, NY 11967, USA