

Recombinant Human ITFG2 Protein, GST-tagged

Cat. No. ITFG2-4491H Lot. No. (See product label)

SPECIFICATION

Product Overview	Human MDS028 full-length ORF (AAH06552, 1 a.a. - 447 a.a.) recombinant protein with GST-tag at N-terminal.
Species	Human
Source	Wheat Germ
Description	ITFG2 (Integrin Alpha FG-GAP Repeat Containing 2) is a Protein Coding gene.
Molecular Mass	74.69 kDa
AA Sequence	MRSVSYVQRVALEFSGSLFPHAICLGVDNDTLNELVVGDTSGKVSUYKNDDSRPW LTCSCQGM L T C V G V G D V C N K G K N L L V A V S A E G W F H L F D L T P A K V L D A S G H H E T L I G E E Q R P V F K Q H I P A N T K V M L I S D I D G D G C R E L V V G Y T D R V V R A F R W E E L G E G P E H L T G Q L V S L K K W M L E G Q V D S L S V T L G P L G L P E L M V S Q P G C A Y A I L L C T W K K D T G S P P A S E G P T D G S R E T P A A R D V V L H Q T S G R I H N K N V S T H L I G N I K Q G H G T E S S G S G L F A L C T L D G T L K L M E E M E E A D K L L W S V Q V D H Q L F A L E K L D V T G N G H E E V V A C A W D G Q T Y I I D H N R T V V R F Q V D E N I R A F C A G L Y A C K E G R N S P C L V Y V T F N Q K I Y V Y W E V Q L E R M E S T N L V K L L E T K P E Y H S L L Q E L G V D P D D L P V T R A L L H Q T L Y H P D Q P P Q C A P S S L Q D P T
Applications	Enzyme-linked Immunoabsorbent Assay Western Blot (Recombinant protein) Antibody Production Protein Array

 Tel: 1-631-559-9269 1-516-512-3133

 Email: info@creative-biomart.com  Fax: 1-631-938-8127

 45-1 Ramsey Road, Shirley, NY 11967, USA

Notes	Best use within three months from the date of receipt of this protein.
Storage	Store at -80 centigrade. Aliquot to avoid repeated freezing and thawing.
Storage Buffer	50 mM Tris-HCl, 10 mM reduced Glutathione, pH=8.0 in the elution buffer.

GENE INFORMATION

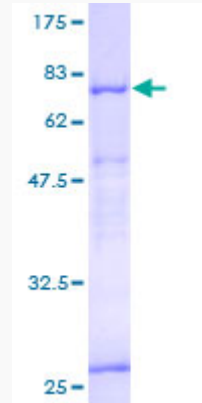
Gene Name	ITFG2 integrin alpha FG-GAP repeat containing 2 [Homo sapiens]
Official Symbol	ITFG2
Synonyms	ITFG2; integrin alpha FG-GAP repeat containing 2; integrin-alpha FG-GAP repeat-containing protein 2; MDS028;
Gene ID	55846
mRNA Refseq	NM_018463
Protein Refseq	NP_060933
UniProt ID	Q969R8

 Tel: 1-631-559-9269 1-516-512-3133

 Email: info@creative-biomart.com  Fax: 1-631-938-8127

 45-1 Ramsey Road, Shirley, NY 11967, USA

**Quality Control
Testing**



12.5% SDS-PAGE Stained with Coomassie Blue

 Tel: 1-631-559-9269 1-516-512-3133

 Email: info@creative-biomart.com  Fax: 1-631-938-8127

 45-1 Ramsey Road, Shirley, NY 11967, USA