

Recombinant Human ITGA1 Protein, GST-tagged

Cat. No. ITGA1-5002H **Lot. No.** (See product label)

SPECIFICATION

Product Overview	Human ITGA1 partial ORF (ENSP00000282588, 951 a.a. - 1059 a.a.) recombinant protein with GST-tag at N-terminal.
Species	Human
Source	Wheat Germ
Description	This gene encodes the alpha 1 subunit of integrin receptors. This protein heterodimerizes with the beta 1 subunit to form a cell-surface receptor for collagen and laminin. The heterodimeric receptor is involved in cell-cell adhesion and may play a role in inflammation and fibrosis. The alpha 1 subunit contains an inserted (I) von Willebrand factor type I domain which is thought to be involved in collagen binding. [provided by RefSeq]
Molecular Mass	37.73 kDa
AA Sequence	QFYSSASEYHISIAANETVPEVINSTEDIGNEINIFYLIRKSGSFPMPELKLSISFPNMTS NGYPVLYPTGLSSSENANCRPHIFEDPFSINSGKKMTTSTDHLKRGTI
Applications	Enzyme-linked Immunoabsorbent Assay Western Blot (Recombinant protein) Antibody Production Protein Array
Notes	Best use within three months from the date of receipt of this protein.

 Tel: 1-631-559-9269 1-516-512-3133

 Email: info@creative-biomart.com  Fax: 1-631-938-8127

 45-1 Ramsey Road, Shirley, NY 11967, USA

Storage Store at -80 centigrade. Aliquot to avoid repeated freezing and thawing.

Storage Buffer 50 mM Tris-HCl, 10 mM reduced Glutathione, pH=8.0 in the elution buffer.

GENE INFORMATION

Gene Name ITGA1 integrin, alpha 1 [Homo sapiens]

Official Symbol ITGA1

Synonyms ITGA1; integrin, alpha 1; integrin alpha-1; CD49a; VLA1; VLA-1; laminin and collagen receptor; very late activation protein 1; CD49 antigen-like family member A;

Gene ID 3672

mRNA Refseq NM_181501

Protein Refseq NP_852478

MIM 192968

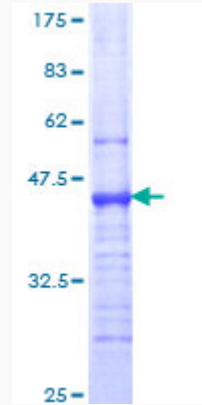
UniProt ID P56199

 Tel: 1-631-559-9269 1-516-512-3133

 Email: info@creative-biomart.com  Fax: 1-631-938-8127

 45-1 Ramsey Road, Shirley, NY 11967, USA

**Quality Control
Testing**



12.5% SDS-PAGE Stained with Coomassie Blue

 Tel: 1-631-559-9269 1-516-512-3133

 Email: info@creative-biomart.com  Fax: 1-631-938-8127

 45-1 Ramsey Road, Shirley, NY 11967, USA