

Recombinant Human ITGA11 Protein, His tagged

Cat. No. ITGA11-001H Lot. No. (See product label)

SPECIFICATION

Product Overview	Recombinant Human ITGA11 Protein with His tag was expressed in Insect Cells
Species	Human
Source	Insect Cells
ProteinLength	Phe23-Pro1141 (Leu524Arg)
Description	This gene encodes an alpha integrin. Integrins are heterodimeric integral membrane proteins composed of an alpha chain and a beta chain. This protein contains an I domain, is expressed in muscle tissue, dimerizes with beta 1 integrin in vitro, and appears to bind collagen in this form. Therefore, the protein may be involved in attaching muscle tissue to the extracellular matrix. Alternative transcriptional splice variants have been found for this gene, but their biological validity is not determined.
Form	Sterile PBS, pH7.4, 0.1% SKL
Molecular Mass	127 kDa
AASequence	MFNMDTRKPRVIPGSRTAFFGYTVQQHDISGNKWL VVGAPLETNGYQKTGDVYKC PVIHGNCTKLNLRVTLSNVSERKDNMRLGLSLATNPKDNSFLAC SPLWSHECGSS YYTTGMCSRVNSNFRFSKTVAPALQRCQTYMDIVIVLDGNSIYPWVEVQHFLINILK KFYIGPGQIQVGVVQYGEDVVHEFHLNDYRSVKDVVEAASHIEQRGGTETRATFGIE FARSEAFQKGGRKGAKKVMIVITDGESHDPDLEKVIQQSERDNVTRYAVAVLGY NRRGINPETFLNEIKYIASDPDDKHFFNVTDEAALKDIVDALGDRIFSLEGTKNETSF

 Tel: 1-631-559-9269 1-516-512-3133

 Email: info@creative-biomart.com  Fax: 1-631-938-8127

 45-1 Ramsey Road, Shirley, NY 11967, USA

GLEMSQTFSSHVVEDGVLLGAVGAYDWNGAVLKETSAGKVIPLRESYLKEFPEEL
 KNHGAYLG YTVTSVSSRQGRVYVAGAPRFNHTGKVLFTMHNNSLTIHQAMRGQ
 QIGSYFGSEITSVDIDGDGVTDVLLVGAPMYFNEGRERGRKVVYELRQNRVYNGTL
 KDSHSYQNARFGSSIASVRDLNQDSYNDVVVGAPLEDNHAGAIYIFHGFRGSILKTP
 KQRITASELATGLQYFGCSIHGQLDLNEDGLIDLAVGALGNAVILWSRPVVQINASLH
 FEPSKINIFHRDCKRSGRDATCLAAFLCFTPIFLAPHFQTTTVGIRYNATMDERRYTP
 RAHLDEGGDRFTNRAVLLSSGQELCERINFHVLDTADYVKPVTFSVEYSLEDPDHG
 PMLDDGWPTTLRVSPFWNGCNEDEHCVPDLVLDARS DLPTAMEYCQRVLRKPAQ
 DCSAYTLSFDTTVFIIESTRQRVAVEATLENRGENAYSTVLNISQSANLQFASLIKED
 SDGSIECVNEERLQKQVCNVSYPFFRAKAKVAFRLDFEFKSIFLHLEIELAAGSD
 SNERDSTKEDNVAPLRFHLKYEADVLFTRSSSLSHYEVKPNSSLERYDGIGPPFSCIF
 RIQNLGLFPIHGMMMKITIPIATRSGNRLLKLRDFLTDEANTSCNIWGNSTEYRPTPVE
 EDLRRAPQLNHSNSDVVSINCNI RLVPNQEINFHLLGNLWLRSLKALKYKSMKIMVNA
 ALQRQFHSPFIFREEDPSRQIVFEISKQEDWQVPHHHHHHHH

Endotoxin	< 1 EU/μg by LAL
Purity	>80% by SDS-PAGE
Storage	Store it under sterile conditions at -20 to -80 centigrade. It is recommended that the protein be aliquoted for optimal storage. Avoid repeated freeze-thaw cycles.
Concentration	0.83 mg/mL by BCA

GENE INFORMATION

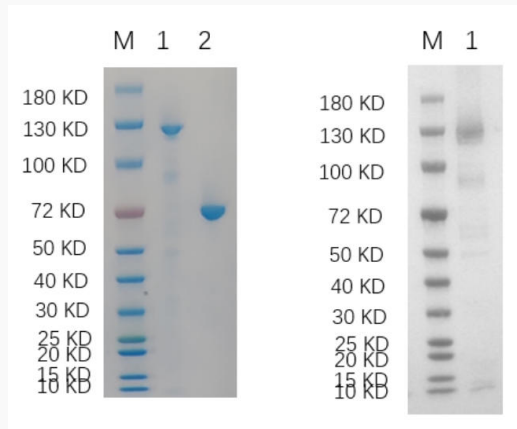
Gene Name	ITGA11 integrin subunit alpha 11 [Homo sapiens (human)]
Official Symbol	ITGA11
Synonyms	ITGA11; integrin, alpha 11; integrin alpha-11; HsT18964;

 Tel: 1-631-559-9269 1-516-512-3133

 Email: info@creative-biomart.com  Fax: 1-631-938-8127

 45-1 Ramsey Road, Shirley, NY 11967, USA

Gene ID	22801
mRNA Refseq	NM_001004439
Protein Refseq	NP_001004439
MIM	604789
UniProt ID	Q9UKX5

SDS-PAGE and WB


Reducing 4%-20% SDS-PAGE (CBB stained) and WB (Anti-His Mouse Monoclonal Antibody) analysis profiles of purified ITGA11. 1. ITGA11: 1 μ g 2. BSA: 1 μ g

Tel: 1-631-559-9269 1-516-512-3133

Email: info@creative-biomart.com Fax: 1-631-938-8127

45-1 Ramsey Road, Shirley, NY 11967, USA