

# Recombinant Full Length Human ITGA11 Protein, C-Flag-tagged

**Cat. No.** ITGA11-1532HFL    **Lot. No.** (See product label)

## SPECIFICATION

<b>Product Overview</b>	Recombinant Full Length Human ITGA11 Protein, fused to Flag-tag at C-terminus, was expressed in Mammalian cells.
<b>Species</b>	Human
<b>Source</b>	Mammalian Cells
<b>Description</b>	This gene encodes an alpha integrin. Integrins are heterodimeric integral membrane proteins composed of an alpha chain and a beta chain. This protein contains an I domain, is expressed in muscle tissue, dimerizes with beta 1 integrin in vitro, and appears to bind collagen in this form. Therefore, the protein may be involved in attaching muscle tissue to the extracellular matrix. Alternative transcriptional splice variants have been found for this gene, but their biological validity is not determined.
<b>Form</b>	25 mM Tris HCl, pH 7.3, 100 mM glycine, 10% glycerol.
<b>Molecular Mass</b>	131 kDa
<b>AA Sequence</b>	MDLPRGLVVAWALSLWPGFTDTFNMDTRKPRVIPGSRTAFFGYTVQQHDISGNKW LVVGAPLETNGYQKT GDVYKCPVIHGNCTKLNLRVTLNSVSEKDNMRLGLSLAT NPKDNSFLACSPLWSHECGSSYYTTGMCS RVNSNFRFSKTVAPALQRCQTYMDIVI VLDGSNSIYPWVEVQHFILINILKKFYIGPGQIQVGVVQYGEDV VHEFHLNDYRSVKD VVEAASHIEQRGGTETRATFGIEFARSEAFQKGGGRKGAKKVMIVITDGESHDSPDL E KVIQQSERDNVTRYAVAVLGGYNNRRGINPETFLNEIKYIASDPDDKHFFNVTDEAALK

 Tel: 1-631-559-9269    1-516-512-3133

 Email: [info@creative-biomart.com](mailto:info@creative-biomart.com)     Fax: 1-631-938-8127

 45-1 Ramsey Road, Shirley, NY 11967, USA

DIVDALGDRIF SLEGTNKNETSFGLEMSQTGFSSHVVEDGVLLGAVGAYDWNGAVL  
 KETSAGKVIPLRESYLKEFPEELKN HGAYLGYTVTSVVSSRQGRVYVAGAPRFNHT  
 GKVILFTMHNNRSLTIHQAMRGQQIGSYFGSEITSVDID GDGVTDVLLVGAPMYFNE  
 GRERGVVYVELRQNLVYNGTLKDSHSYQNFARFGSSIASVRDLNQDSYNDV VVG  
 APLEDNHAGAIYIFHGFRGSILKTPKQRITASELATGLQYFGCSIHGQLDLNEDGLIDL  
 AVGALGNA VILWSRPVVQINASLHFEPKINIFHRDCKRSGRDATCLAAFLCFTPIFL  
 APHFQTTTVGIRYNATMDER RYTPRAHLDEGGDRFTNRAVLLSSGQELCERINFHV  
 LDTADYVKPVTFSVEYSLEDPDHGPMDDGWPTT LRVSVPFWNGCNEDEHCVPDL  
 VLDARSDLPAMEYCQRVLRKPAQDCSAYTLSFDTTVFIIESTRQRVAV EATLENRG  
 ENAYSTVLNISQSANLQFASLIQKEDSDGSIIECVNEERRLQKQVCNVSYPFFRAKAK  
 VAFRL DFEFSKSIFLHHLEIELAAGSDSNERDSTKEDNVAPLRFHLKYEADVLFTRSS  
 SLSHYEVKPNSSLERYD GIGPPFSCIFRIQNLGLFPIHGMMMKITIPATRSNRLKL  
 RDFLTDEANTSCNIWGNSTEYRPTVVEE DLRRAPQLNHSNSDVVSINCNIRLVPNQ  
 EINFHLLGNLWLRSLKALKYKSMKIMVNAALQRQFHSPFIFR EEDPSRQIVFEISKQE  
 DWQVPIWIIVGSTLGGLLLLALLVLALWKLGFRRSARRRREPGLDPTPKVLETRTRPL  
 EQKLISEEDLAANDILDYKDDDDKV

<b>Purity</b>	> 80% as determined by SDS-PAGE and Coomassie blue staining.
<b>Stability</b>	Stable for 12 months from the date of receipt of the product under proper storage and handling conditions. Avoid repeated freeze-thaw cycles.
<b>Storage</b>	Store at -80 centigrade.
<b>Concentration</b>	>50 ug/mL as determined by microplate BCA method.
<b>Preparation</b>	Recombinant protein was captured through anti-DDK affinity column followed by conventional chromatography steps.
<b>Protein Families</b>	Druggable Genome, Transmembrane

 Tel: 1-631-559-9269 1-516-512-3133

 Email: [info@creative-biomart.com](mailto:info@creative-biomart.com)  Fax: 1-631-938-8127

 45-1 Ramsey Road, Shirley, NY 11967, USA

**Protein Pathways** Arrhythmogenic right ventricular cardiomyopathy (ARVC), Dilated cardiomyopathy, ECM-receptor interaction, Focal adhesion, Hypertrophic cardiomyopathy (HCM), Regulation of actin cytoskeleton

**Full Length** Full L.

## GENE INFORMATION

**Gene Name** [ITGA11 integrin subunit alpha 11 \[ Homo sapiens \(human\) \]](#)

**Official Symbol** [ITGA11](#)

**Synonyms** HsT18964

**Gene ID** [22801](#)

**mRNA Refseq** [NM\\_001004439.2](#)

**Protein Refseq** [NP\\_001004439.1](#)

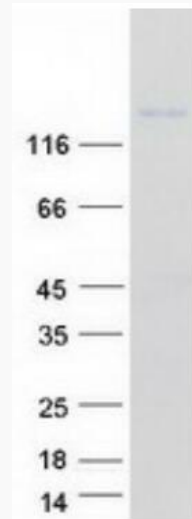
**MIM** [604789](#)

**UniProt ID** [Q9UKX5](#)

 Tel: 1-631-559-9269 1-516-512-3133

 Email: [info@creative-biomart.com](mailto:info@creative-biomart.com)  Fax: 1-631-938-8127

 45-1 Ramsey Road, Shirley, NY 11967, USA



Coomassie blue staining of purified ITGA11 protein.

 Tel: 1-631-559-9269 1-516-512-3133

 Email: [info@creative-biomart.com](mailto:info@creative-biomart.com)  Fax: 1-631-938-8127

 45-1 Ramsey Road, Shirley, NY 11967, USA