

Recombinant Human ITGA11 Protein, GST-tagged

Cat. No. ITGA11-5001H Lot. No. (See product label)

SPECIFICATION

Product Overview	Human ITGA11 partial ORF (NP_001004439, 793 a.a. - 893 a.a.) recombinant protein with GST-tag at N-terminal.
Species	Human
Source	Wheat Germ
Description	<p>This gene encodes an alpha integrin. Integrins are heterodimeric integral membrane proteins composed of an alpha chain and a beta chain. This protein contains an I domain, is expressed in muscle tissue, dimerizes with beta 1 integrin in vitro, and appears to bind collagen in this form. Therefore, the protein may be involved in attaching muscle tissue to the extracellular matrix. Alternative transcriptional splice variants have been found for this gene, but their biological validity is not determined. [provided by RefSeq]</p>
Molecular Mass	36.85 kDa
AA Sequence	LDARSDLPTAMEYCQRVLRKPAQDCSAYTLSFDTTVFIIESTRQRVAVEATLENRGE NAYSTVLNISQSANLQFASLIQKEDSDGSIECVNEERRLQKQVC
Applications	Enzyme-linked Immunoabsorbent Assay Western Blot (Recombinant protein) Antibody Production Protein Array

 Tel: 1-631-559-9269 1-516-512-3133

 Email: info@creative-biomart.com  Fax: 1-631-938-8127

 45-1 Ramsey Road, Shirley, NY 11967, USA

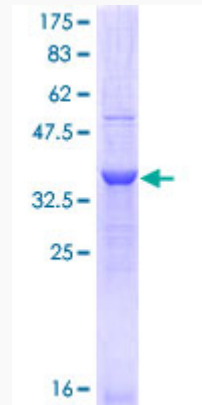
Notes	Best use within three months from the date of receipt of this protein.
Storage	Store at -80 centigrade. Aliquot to avoid repeated freezing and thawing.
Storage Buffer	50 mM Tris-HCl, 10 mM reduced Glutathione, pH=8.0 in the elution buffer.
GENE INFORMATION	
Gene Name	ITGA11 integrin, alpha 11 [Homo sapiens]
Official Symbol	ITGA11
Synonyms	ITGA11; integrin, alpha 11; integrin alpha-11; HsT18964;
Gene ID	22801
mRNA Refseq	NM_001004439
Protein Refseq	NP_001004439
MIM	604789
UniProt ID	Q9UKX5

 Tel: 1-631-559-9269 1-516-512-3133

 Email: info@creative-biomart.com  Fax: 1-631-938-8127

 45-1 Ramsey Road, Shirley, NY 11967, USA

**Quality Control
Testing**



12.5% SDS-PAGE Stained with Coomassie Blue

 Tel: 1-631-559-9269 1-516-512-3133

 Email: info@creative-biomart.com  Fax: 1-631-938-8127

 45-1 Ramsey Road, Shirley, NY 11967, USA