

# Recombinant Human ITGA2B protein(751-820 aa), C-His-tagged

**Cat. No.** ITGA2B-2597H    **Lot. No.** (See product label)

## SPECIFICATION

<b>Product Overview</b>	Recombinant Human ITGA2B protein(P08514)(751-820 aa), fused with C-terminal His tag, was expressed in E. coli.
<b>Species</b>	Human
<b>Source</b>	E.coli
<b>ProteinLength</b>	751-820 aa
<b>Form</b>	0.15 M Phosphate buffered saline
<b>Molecular Mass</b>	10.5 kDa
<b>Storage</b>	Shipped on dry ice. Avoid repeated freeze-thaw cycles. Upon receipt, 2 days when stored at 2 to 8 °C after thawing. Up to 12 months when aliquoted and stored at -20 to -80°C.
<b>Reconstitution</b>	It is recommended that sterile water be added to the vial to prepare a stock solution of 0.2 ug/ul. Centrifuge the vial at 4°C before opening to recover the entire contents.
<b>AA Sequence</b>	QLQIRSKNSQNPNSKIVLLDVPVRAEAQVELRGNSFPASLVVAAEEGEREQNSLDS WGPKVEHTYELHNN

## GENE INFORMATION

 Tel: 1-631-559-9269    1-516-512-3133

 Email: [info@creative-biomart.com](mailto:info@creative-biomart.com)     Fax: 1-631-938-8127

 45-1 Ramsey Road, Shirley, NY 11967, USA

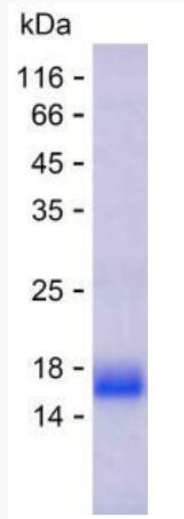
<b>Gene Name</b>	ITGA2B integrin, alpha 2b (platelet glycoprotein IIb of IIb/IIIa complex, antigen CD41) [ Homo sapiens ]
<b>Official Symbol</b>	ITGA2B
<b>Synonyms</b>	ITGA2B; integrin, alpha 2b (platelet glycoprotein IIb of IIb/IIIa complex, antigen CD41); GP2B, integrin, alpha 2b (platelet glycoprotein IIb of IIb/IIIa complex, antigen CD41B); integrin alpha-IIb; CD41; CD41B; GPalpha IIb; platelet-specific antigen BAK; platelet membrane glycoprotein IIb; platelet fibrinogen receptor, alpha subunit; GT; GTA; GP2B; HPA3; GPIIb; BDPLT2;
<b>Gene ID</b>	3674
<b>mRNA Refseq</b>	NM_000419
<b>Protein Refseq</b>	NP_000410
<b>MIM</b>	607759
<b>UniProt ID</b>	P08514

 Tel: 1-631-559-9269 1-516-512-3133

 Email: [info@creative-biomart.com](mailto:info@creative-biomart.com)  Fax: 1-631-938-8127

 45-1 Ramsey Road, Shirley, NY 11967, USA

**SDS-PAGE**



 Tel: 1-631-559-9269 1-516-512-3133

 Email: [info@creative-biomart.com](mailto:info@creative-biomart.com)  Fax: 1-631-938-8127

 45-1 Ramsey Road, Shirley, NY 11967, USA