

Recombinant Human ITGA2B Protein (Met1-Arg993), C-His tagged

Cat. No. ITGA2B-4318H **Lot. No.** (See product label)

SPECIFICATION

Product Overview	Recombinant human ITGA2B (Met1-Arg993) fused with the C-terminal His tag was expressed in Mammalian cells.
Species	Human
Source	Mammalian Cells
ProteinLength	Met1-Arg993
Description	<p>Integrin alpha 2b beta 3 (also alpha IIb beta 3 or GPIIb/IIIa) is the only alpha 2b integrin and shares the beta 3 subunit only with alpha V beta 3. It is the non-covalent heterodimer of type I transmembrane subunits, alpha 2b/CD41 (present as a disulfide-linked complex of 114 kDa heavy and 22 kDa light chains) and 93 kDa beta 3/CD61. It is the most abundant integrin expressed by megakaryocytes and platelets, both on the surface and within alpha granules. Deficiencies of alpha 2b beta 3 produce Glanzmann thrombasthenia, a potentially serious bleeding disorder. In its constitutively inactive state, alpha 2b beta 3 is flexed within the extracellular domains. Activation, either by intracellular signaling or by Mg²⁺ or Mn²⁺ binding, extends the integrin to expose the ligand binding site created by interaction of the beta 3 vWFA domain with the alpha 2b beta -propeller structure. The 962 aa human alpha 2b ECD shares 78-83% aa sequence identity with mouse, rat, canine, equine and porcine alpha 2b while the 685 aa human beta 3 ECD shares 95% aa identity with horse and dog, and 89-92% aa identity</p>

 Tel: 1-631-559-9269 1-516-512-3133

 Email: info@creative-biomart.com  Fax: 1-631-938-8127

 45-1 Ramsey Road, Shirley, NY 11967, USA

with mouse, rat and porcine beta 3. It is unclear whether splice variants of beta 3 that differ in the cytoplasmic domain are expressed significantly in platelets. However, platelet expression of a beta 3 splice variant that produces a soluble 60 kDa beta 3 isoform, and an alpha 2b isoform lacking aa 948-982, have been reported. Active cell surface alpha 2b beta 3 adheres to fibrinogen, mediating platelet/platelet interactions that initiate a cascade of platelet activation and aggregation, extracellular matrix adhesion, formation of thrombi and clot retraction. It also binds matrix proteins that have an RGD motif, including fibronectin, plasminogen, prothrombin, thrombospondin and vitronectin. Targeting of alpha 2b beta 3 by therapeutic antibodies or small molecules can inhibit formation of thrombi in patients with acute coronary syndrome, and potentially inhibits tumor angiogenesis and metastasis by blocking interaction of platelet alpha 2b beta 3 with tumor cells.

Form	Lyophilized powder/frozen liquid
Molecular Mass	109.34 kDa
Endotoxin	< 1.0 EU/μg of the protein as determined by the LAL method.
Purity	>90% as determined by SDS-PAGE.
Notes	For research use only.
Storage	Use a manual defrost freezer and avoid repeated freeze thaw cycles. Store at 2 to 8 centigrade for one week. Store at -20 to -80 centigrade for twelve months from the date of receipt.
Storage Buffer	Supplied as solution form in PBS or lyophilized from PBS.

 Tel: 1-631-559-9269 1-516-512-3133

 Email: info@creative-biomart.com  Fax: 1-631-938-8127

 45-1 Ramsey Road, Shirley, NY 11967, USA

Reconstitution Reconstitute in sterile water for a stock solution.

Shipping They are shipped out with dry ice/blue ice unless customers require otherwise.

GENE INFORMATION

Gene Name [ITGA2B integrin, alpha 2b \(platelet glycoprotein IIb of IIb/IIIa complex, antigen CD41\)](#)
[[Homo sapiens \(human\)](#)]

Official Symbol [ITGA2B](#)

Synonyms [ITGA2B](#); integrin, alpha 2b (platelet glycoprotein IIb of IIb/IIIa complex, antigen CD41); [GP2B](#), integrin, alpha 2b (platelet glycoprotein IIb of IIb/IIIa complex, antigen CD41B); integrin alpha-IIb; [CD41](#); [CD41B](#); [GPalpha IIb](#); platelet-specific antigen [BAK](#); platelet membrane glycoprotein IIb; platelet fibrinogen receptor, alpha subunit; [GT](#); [GTA](#); [GP2B](#); [HPA3](#); [GPIIb](#); [BDPLT2](#);

Gene ID [3674](#)

mRNA Refseq [NM_000419](#)

Protein Refseq [NP_000410](#)

MIM [607759](#)

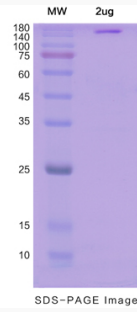
UniProt ID [P08514](#)

 Tel: 1-631-559-9269 1-516-512-3133

 Email: info@creative-biomart.com  Fax: 1-631-938-8127

 45-1 Ramsey Road, Shirley, NY 11967, USA

SDS-PAGE



 Tel: 1-631-559-9269 1-516-512-3133

 Email: info@creative-biomart.com  Fax: 1-631-938-8127

 45-1 Ramsey Road, Shirley, NY 11967, USA