

Recombinant Full Length Human ITGA4 Protein, C-Flag-tagged

Cat. No. ITGA4-664HFL Lot. No. (See product label)

SPECIFICATION

Product Overview	Recombinant Full Length Human ITGA4 Protein, fused to Flag-tag at C-terminus, was expressed in Mammalian cells.
Species	Human
Source	Mammalian Cells
Description	The gene encodes a member of the integrin alpha chain family of proteins. Integrins are heterodimeric integral membrane proteins composed of an alpha chain and a beta chain that function in cell surface adhesion and signaling. The encoded preproprotein is proteolytically processed to generate light and heavy chains that comprise the alpha 4 subunit. This subunit associates with a beta 1 or beta 7 subunit to form an integrin that may play a role in cell motility and migration. This integrin is a therapeutic target for the treatment of multiple sclerosis, Crohn's disease and inflammatory bowel disease. Alternative splicing results in multiple transcript variants.
Form	25 mM Tris HCl, pH 7.3, 100 mM glycine, 10% glycerol.
Molecular Mass	111.2 kDa
AA Sequence	MAWEARREPGPRRAAVRETVMLLLCLGVPTGRPYNVDTESALLYQGPHNTLFGYS VVLHSHGANRWLLVG APTANWLANASVINPGAIYRCRIGKNPGQTCEQLQLGSPN GEPCKGKTCLEERDNQWLGVTLRSRQPGENG IVTCGHRWKNIFYIKNENKLP TGCC YGVPPDLRTELSKRIAPCYQDYVKKFGENFASCQAGISSFYTKDL IVMGAPGSSYW TGSLFVYNITTNKYKAFLDKQNQVKFGSYLGYSVGAGHFRSQHTTEVVGGAPQHEQ

 Tel: 1-631-559-9269 1-516-512-3133

 Email: info@creative-biomart.com  Fax: 1-631-938-8127

 45-1 Ramsey Road, Shirley, NY 11967, USA

IGK AYIFSIDEKELNILHEMKGKGLGSYFGASVCAVDLNADGFSDLLVGAPMQSTIRE
 EGRVFVYINSGSGAV MNAMETNLVGSDKYAARFGESIVNLGDIDNDGFEDVAIGAP
 QEDDLQGAIYIYNGRADGISSTFSQRIEG LQISKSLSMFGQSISGQIDADNNGYVDVA
 VGAFRSDSAVLLRTRPVVIVDASLSHPESVNRKTFDCVENG WPSVCIDLTLCFSYKG
 KEVPGYIVLFYNMSLDVNRKAESPPRFYFSSNGTSDVITGSIQVSSREANCRTH QAF
 MRKDVRDILTPIQIEAAYHLGPHVISKRSTEEFPPLQPILQQKKEKDIMKKTINFARFCA
 HENC SAD LQVSAKIGFLKPHENKTYLAVGSMKTLMLNVSLFNAGDDAYETTLHVKL
 PVGLYFIKILEEEKQINCEV TDNSGVVQLDCSIGIYVDHLRIDISFLLDVSSLSRAE
 EDLSITVHATCENEEEMDNLKHSRVTVAIPL KYEVKLVHGFVNPTSFVYGSNDENE
 PETCMVEKMNLTFHVINTGNSMAPNVSVEIMVPNSFSPQTDKLF NILDVQTTTGECH
 FENYQRVCALEQQKSAMQTLKGIVQFLSKTDKRLLYCIKADPHCLNFLCNFGKMESG
 KEASVHIQLEGRPSILEMDETSALKFEIRATGFPEPNRVIENKDENVAHVLEGLH
 HQRPKRYFTIVI
 ISSLLLLGLIVLLLLISYVMWKAGFFKRQYKSILQEENRRDSWSYINSKSND DTRTRPLE
 QKLISEEDLAANDILDYKDDDDKV

Purity	> 80% as determined by SDS-PAGE and Coomassie blue staining.
Stability	Stable for 12 months from the date of receipt of the product under proper storage and handling conditions. Avoid repeated freeze-thaw cycles.
Storage	Store at -80 centigrade.
Concentration	>50 ug/mL as determined by microplate BCA method.
Preparation	Recombinant protein was captured through anti-DDK affinity column followed by conventional chromatography steps.
Protein Families	Druggable Genome, ES Cell Differentiation/IPS, Transmembrane

 Tel: 1-631-559-9269 1-516-512-3133

 Email: info@creative-biomart.com  Fax: 1-631-938-8127

 45-1 Ramsey Road, Shirley, NY 11967, USA

Protein Pathways Arrhythmogenic right ventricular cardiomyopathy (ARVC), Cell adhesion molecules (CAMs), Dilated cardiomyopathy, ECM-receptor interaction, Focal adhesion, Hematopoietic cell lineage, Hypertrophic cardiomyopathy (HCM), Leukocyte transendothelial migration, Regulation of actin cytoskeleton

Full Length Full L.

GENE INFORMATION

Gene Name ITGA4 integrin subunit alpha 4 [Homo sapiens (human)]

Official Symbol ITGA4

Synonyms IA4; CD49D

Gene ID 3676

mRNA Refseq NM_000885.6

Protein Refseq NP_000876.3

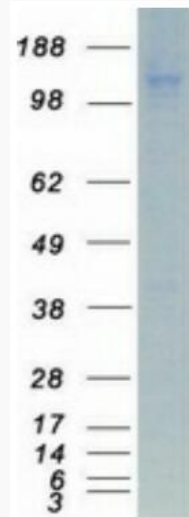
MIM 192975

UniProt ID P13612

 Tel: 1-631-559-9269 1-516-512-3133

 Email: info@creative-biomart.com  Fax: 1-631-938-8127

 45-1 Ramsey Road, Shirley, NY 11967, USA



Coomassie blue staining of purified ITGA4 protein.

 Tel: 1-631-559-9269 1-516-512-3133

 Email: info@creative-biomart.com  Fax: 1-631-938-8127

 45-1 Ramsey Road, Shirley, NY 11967, USA