

# Recombinant Human ITGA5 & ITGB1 protein, Flag/His-tagged

**Cat. No.** ITGA5&ITGB1-1878H    **Lot. No.** (See product label)

## SPECIFICATION

<b>Product Overview</b>	Recombinant Human ITGA5(Met1-Tyr995) & ITGB1(Met1-Asp728) protein was fused to Flag/His-tag at the C-terminus and expressed in HEK293 cells.
<b>Species</b>	Human
<b>Source</b>	HEK293
<b>ProteinLength</b>	1745
<b>Description</b>	The product of this gene belongs to the integrin alpha chain family. Integrins are heterodimeric integral membrane proteins composed of an alpha subunit and a beta subunit that function in cell surface adhesion and signaling. The encoded preproprotein is proteolytically processed to generate light and heavy chains that comprise the alpha 5 subunit. This subunit associates with the beta 1 subunit to form a fibronectin receptor. This integrin may promote tumor invasion, and higher expression of this gene may be correlated with shorter survival time in lung cancer patients. Note that the integrin alpha 5 and integrin alpha V subunits are encoded by distinct genes.
<b>Predicted N Terminal</b>	Phe42 & Gln21
<b>Form</b>	Lyophilized from sterile PBS, pH 7.4. Normally 5% - 8% trehalose, mannitol and 0.01% Tween80 are added as protectants before lyophilization.
<b>Molecular Mass</b>	The recombinant heterodimer of human ITGA5/ITGB1 comprises 1745 (996 + 749)

 Tel: 1-631-559-9269    1-516-512-3133

 Email: [info@creative-biomart.com](mailto:info@creative-biomart.com)     Fax: 1-631-938-8127

 45-1 Ramsey Road, Shirley, NY 11967, USA

amino acids and has a calculated molecular mass of 192 (109 + 83) kDa. As a result of glycosylation, the apparent molecular mass of rh ITGA5/ITGB1 heterodimer is approximately 120 & 140 kDa in SDS-PAGE under reducing conditions.

**Endotoxin** <1.0 EU per µg of the protein as determined by the LAL method.

**Purity** >90% as determined by SDS-PAGE.

**Stability** Samples are stable for up to twelve months from date of receipt at -20 centigrade to -80 centigrade.

**Storage** Store it under sterile conditions at -20 centigrade to -80 centigrade. It is recommended that the protein be aliquoted for optimal storage. Avoid repeated freeze-thaw cycles.

**Shipping** In general, recombinant proteins are provided as lyophilized powder which are shipped at ambient temperature.  
Bulk packages of recombinant proteins are provided as frozen liquid. They are shipped out with blue ice unless customers require otherwise.

## GENE INFORMATION

**Gene Name** [ITGA5](#)

**Official Symbol** [ITGA5](#)

**Synonyms** CD49e; FNRA; VLA-5; VLA5A

**Gene ID** [3678](#)

**mRNA Refseq** [NM\\_002205.5](#)

 Tel: 1-631-559-9269 1-516-512-3133

 Email: [info@creative-biomart.com](mailto:info@creative-biomart.com)  Fax: 1-631-938-8127

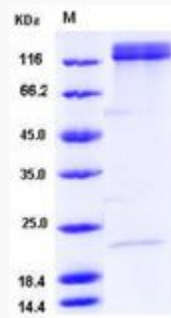
 45-1 Ramsey Road, Shirley, NY 11967, USA

**Protein Refseq** NP\_002196.4

**MIM** 135620

**UniProt ID** P08648

**SDS-PAGE of  
ITGA5&ITGB1-1878H**



 Tel: 1-631-559-9269 1-516-512-3133

 Email: [info@creative-biomart.com](mailto:info@creative-biomart.com)  Fax: 1-631-938-8127

 45-1 Ramsey Road, Shirley, NY 11967, USA