

Recombinant Full Length Human ITGA5 Protein, C-Flag-tagged

Cat. No. ITGA5-1624HFL Lot. No. (See product label)

SPECIFICATION

Product Overview	Recombinant Full Length Human ITGA5 Protein, fused to Flag-tag at C-terminus, was expressed in Mammalian cells.
Species	Human
Source	Mammalian Cells
Description	The product of this gene belongs to the integrin alpha chain family. Integrins are heterodimeric integral membrane proteins composed of an alpha subunit and a beta subunit that function in cell surface adhesion and signaling. The encoded preproprotein is proteolytically processed to generate light and heavy chains that comprise the alpha 5 subunit. This subunit associates with the beta 1 subunit to form a fibronectin receptor. This integrin may promote tumor invasion, and higher expression of this gene may be correlated with shorter survival time in lung cancer patients. Note that the integrin alpha 5 and integrin alpha V subunits are encoded by distinct genes.
Form	25 mM Tris HCl, pH 7.3, 100 mM glycine, 10% glycerol.
Molecular Mass	110 kDa
AA Sequence	MGSRTPEsplHAVQLRWGPRRRPPLLPLLLLLLPPPPRVGGFNLDAEAPAVLSGPP GSFFGFSVEFYRPG TDGVSVLVGAPKANTSQPGVLQGGAVYLCPWGASPTQCTPI EFDSKGSRLLESSLSSSEGEPEVEYKSLQ WFGATVRAHGSSILACAPLYSWRTEKE PLSDPVGTCYLSTDNFTRILEYAPCRSDFSWAAGQGYCQGGFS AEFTKTGRVVLG

 Tel: 1-631-559-9269 1-516-512-3133

 Email: info@creative-biomart.com  Fax: 1-631-938-8127

 45-1 Ramsey Road, Shirley, NY 11967, USA

GPGSYFWQGGQILSATQEQIAESYYPEYLINLVQQQLQTRQASSIYDDSYLGYSVAVG
 E FSGDDTEDFVAGVPGNLTGYVTILNGSDIRSLYNFSGEQMASYFGYAVAATDV
 NGDGLDDLLVGAPLL MDRTPDGRPQEVGRVYVYLQHPAGIEPTPTLTLTGHDEFGR
 FGSSLTPLGDLQDGYNDVAIGAPFGGET QQGVVVFVPGGPGGLGSKPSQVLQPL
 WAASHTPDFFGSALRGGRLDNGNGYPDLIVGSFGVDKAVVYRGR PIVSASASLTIF
 PAMFNPEERSCSLEGNPVACINLSFCLNASGKHVADSIGFTVELQLDWQKQKGGVR
 RA LFLASRQATLTQTLLIQNGAREDCREMKIYLRNESEFRDKLSPIHIALNFSLDPQA
 PVDSHGLRPALHYQ SKSRIEDKAQILLDCGEDNICVPDLQLEVFGEQNHVYLGDKN
 ALNLTFFHAQNVGEGGAYEAELRVTAPPE AEYSGLVRHPGNFSSLSCDYFAVNQSR
 LLVCDLGNPMKAGASLWGGLRFTVPHLRDTKKTIFDFQILSK NLNNSQSDVVSFR
 LSVEAQAQVTLNGVSKPEAVLFPVSDWHPRDQPQKEEDLGPVHHVYELINQGPSS
 I SQGVLELSCPQALEGQQLLYVTRVTGLNCTTNHPINPKGLELDPEGSLHHQQKRE
 APSRSSASSGPQILK CPEAECFRLRCELGPLHQQESQSLQLHFRVWAKTFLQREH
 QPFSLQCEAVYKALKMPYRILPRQLPQKER QVATAVQWTKAEGSYGVPLWIIILAILF
 GLLLLGLLIYILYKLGFFKRSLPYGTAMEKAQLKPPATSDATRTRPLEQKLISEEDLAA
 NDILDYKDDDDKV

Purity	> 80% as determined by SDS-PAGE and Coomassie blue staining.
Stability	Stable for 12 months from the date of receipt of the product under proper storage and handling conditions. Avoid repeated freeze-thaw cycles.
Storage	Store at -80 centigrade.
Concentration	>50 ug/mL as determined by microplate BCA method.
Preparation	Recombinant protein was captured through anti-DDK affinity column followed by conventional chromatography steps.
Protein Families	Druggable Genome, ES Cell Differentiation/IPS, Transmembrane

 Tel: 1-631-559-9269 1-516-512-3133

 Email: info@creative-biomart.com  Fax: 1-631-938-8127

 45-1 Ramsey Road, Shirley, NY 11967, USA

Protein Pathways Arrhythmogenic right ventricular cardiomyopathy (ARVC), Dilated cardiomyopathy, ECM-receptor interaction, Focal adhesion, Hematopoietic cell lineage, Hypertrophic cardiomyopathy (HCM), Regulation of actin cytoskeleton

Full Length Full L.

GENE INFORMATION

Gene Name [ITGA5 integrin subunit alpha 5 \[Homo sapiens \(human\) \]](#)

Official Symbol [ITGA5](#)

Synonyms FNRA; CD49e; VLA-5; VLA5A

Gene ID [3678](#)

mRNA Refseq [NM_002205.5](#)

Protein Refseq [NP_002196.4](#)

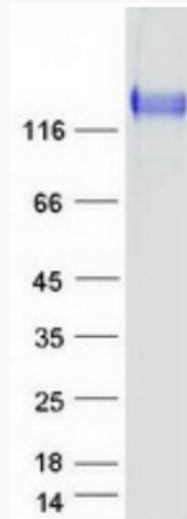
MIM [135620](#)

UniProt ID [P08648](#)

 Tel: 1-631-559-9269 1-516-512-3133

 Email: info@creative-biomart.com  Fax: 1-631-938-8127

 45-1 Ramsey Road, Shirley, NY 11967, USA



Coomassie blue staining of purified ITGA5 protein.

 Tel: 1-631-559-9269 1-516-512-3133

 Email: info@creative-biomart.com  Fax: 1-631-938-8127

 45-1 Ramsey Road, Shirley, NY 11967, USA