

# Recombinant Human ITGA6 Protein, Myc/DDK-tagged, C13 and N15-labeled

**Cat. No.** ITGA6-1218H    **Lot. No.** (See product label)

## SPECIFICATION

<b>Product Overview</b>	ITGA6 MS Standard C13 and N15-labeled recombinant protein (NP_000201) with a C-terminal MYC/DDK tag, was expressed in HEK293 cells.
<b>Species</b>	Human
<b>Source</b>	HEK293
<b>Description</b>	The gene encodes a member of the integrin alpha chain family of proteins. Integrins are heterodimeric integral membrane proteins composed of an alpha chain and a beta chain that function in cell surface adhesion and signaling. The encoded preproprotein is proteolytically processed to generate light and heavy chains that comprise the alpha 6 subunit. This subunit may associate with a beta 1 or beta 4 subunit to form an integrin that interacts with extracellular matrix proteins including members of the laminin family. The alpha 6 beta 4 integrin may promote tumorigenesis, while the alpha 6 beta 1 integrin may negatively regulate erbB2/HER2 signaling. Alternative splicing results in multiple transcript variants.
<b>Molecular Mass</b>	119.48 kDa
<b>AA Sequence</b>	MAAAGQLCLLYLSAGLLSRLGAAFNLDTREDNVIRKYGDPSLFGFSLAMHWQLQP EDKRLLLVGAPRAEALPLQRANRTGGLYSCDITARGPCTRIEFDNDADPTSESKEDQ WMGVTVQSQQPGGKVVTCAHRYEKRQHVNTKQESRDIFGRCYVLSQNLRIEDDMD GGDWSFCDGRLRGHEKFGSCQQGVAATFTKDFHYIVFGAPGTYNWKGIVRVEQKN

 Tel: 1-631-559-9269    1-516-512-3133

 Email: [info@creative-biomart.com](mailto:info@creative-biomart.com)     Fax: 1-631-938-8127

 45-1 Ramsey Road, Shirley, NY 11967, USA

NTFFDMNIFEDGPYEVGGETEHDSESLVPVPANSYLGFSLDGKIVSKDEITFVSGA  
 PRANHSGAVVLLKRDMKSAHLLPEHIFDGEGLASSFGYDVAVVDLNKDGWQDIVIGA  
 PQYFDRDGEVGGAVYVYMNQQGRWNNVKPIRLNGTKDSMFGIAVKNIGDINQDGY  
 PDIAVGAPYDDLKGVFIYHGSANGINTKPTQVLKGISPYFGYSIAGNMDLDRNSYPDV  
 AVGSLSDSVTIFRSRPVINIQTITVTPNRIDL RQKTACGAPSGICLQVKSCFEYTANP  
 AGYNPSISIVGTLEAEKERRKSGLSSRVQFRNQGSEPKYTQELTLKRQKQKVCMEE  
 TLWLQDNIRDKLRPIPIASVEIQEPSSRRRVNSLPEVLPILNSDEPKTAHIDVHFLKE  
 GCGDDNVCNSNLKLEYKFACTREGNQDKFSYLPKQGVPELVKDKQDIALEITVNTS  
 PSNPRNPTKDGDDAHEAKLIATFPDTLTYSAYRELRAFPEKQLSCVANQNGSQADC  
 ELGNPFKRNSNVTFYLVLTSTTEVTFDTPDLINLKLETTSNQDNLAPITAKAKVVIALL  
 SVSGVAKPSQVYFGGTVVGEQAMKSEDEVGSLIEYEFRVINLGKPLTNLGTATLNIQ  
 WPKEISNGKWL LYLKVESKGLEKVTCEPQKEINSLNL TESHNSRKKREITEKQIDDN  
 RKFSLFAERKYQTLNCSVNVNCVNIRCPLRGLDSKASLILRSRLWNSTFLEEYSKLN  
 LDILMRAFIDV TAAAENIRLPNAGTQVRVTVFPSKTVAQYSGVPWWIILVAILAGILMLA  
 LLVFILWKCGFFKRKNDHYDATYHKAIEHAQPSDKERLTSDATRTRPLEQKLISEED  
 LAANDILDYKDDDDKV

<b>Purity</b>	> 80% as determined by SDS-PAGE and Coomassie blue staining
<b>Stability</b>	Stable for 3 months from receipt of products under proper storage and handling conditions.
<b>Storage</b>	Store at -80 centigrade. Avoid repeated freeze-thaw cycles.
<b>Concentration</b>	50 µg/mL as determined by BCA
<b>Storage Buffer</b>	100 mM glycine, 25 mM Tris-HCl, pH 7.3.

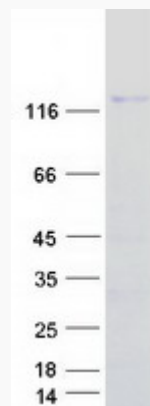
## GENE INFORMATION

 Tel: 1-631-559-9269 1-516-512-3133

 Email: [info@creative-biomart.com](mailto:info@creative-biomart.com)  Fax: 1-631-938-8127

 45-1 Ramsey Road, Shirley, NY 11967, USA

<b>Gene Name</b>	ITGA6 integrin subunit alpha 6 [ Homo sapiens (human) ]
<b>Official Symbol</b>	ITGA6
<b>Synonyms</b>	ITGA6; integrin, alpha 6; integrin alpha-6; CD49f; integrin alpha6B; CD49 antigen-like family member F; VLA-6; ITGA6B; FLJ18737; DKFZp686J01244;
<b>Gene ID</b>	3655
<b>mRNA Refseq</b>	NM_000210
<b>Protein Refseq</b>	NP_000201
<b>MIM</b>	147556
<b>UniProt ID</b>	P23229

**SDS-PAGE**


 Tel: 1-631-559-9269 1-516-512-3133

 Email: [info@creative-biomart.com](mailto:info@creative-biomart.com)  Fax: 1-631-938-8127

 45-1 Ramsey Road, Shirley, NY 11967, USA