

# Recombinant Human ITGA6 Protein (Met1-Ser1050), C-His tagged

**Cat. No.** ITGA6-4314H    **Lot. No.** (See product label)

## SPECIFICATION

<b>Product Overview</b>	Recombinant human ITGA6 (Met1-Ser1050) fused with the C-terminal His tag was expressed in Mammalian cells.
<b>Species</b>	Human
<b>Source</b>	Mammalian Cells
<b>ProteinLength</b>	Met1-Ser1050
<b>Form</b>	Lyophilized powder/frozen liquid
<b>Molecular Mass</b>	115.61 kDa
<b>Endotoxin</b>	< 1.0 EU/μg of the protein as determined by the LAL method.
<b>Purity</b>	>90% as determined by SDS-PAGE.
<b>Notes</b>	For research use only.
<b>Storage</b>	Use a manual defrost freezer and avoid repeated freeze thaw cycles. Store at 2 to 8 centigrade for one week. Store at -20 to -80 centigrade for twelve months from the date of receipt.
<b>Storage Buffer</b>	Supplied as solution form in PBS or lyophilized from PBS.

 Tel: 1-631-559-9269    1-516-512-3133

 Email: [info@creative-biomart.com](mailto:info@creative-biomart.com)     Fax: 1-631-938-8127

 45-1 Ramsey Road, Shirley, NY 11967, USA

**Reconstitution** Reconstitute in sterile water for a stock solution.

**Shipping** They are shipped out with dry ice/blue ice unless customers require otherwise.

## GENE INFORMATION

**Gene Name** ITGA6 integrin, alpha 6 [ Homo sapiens (human) ]

**Official Symbol** ITGA6

**Synonyms** ITGA6; integrin, alpha 6; integrin alpha-6; CD49f; integrin alpha6B; CD49 antigen-like family member F; VLA-6; ITGA6B; FLJ18737; DKFZp686J01244;

**Gene ID** 3655

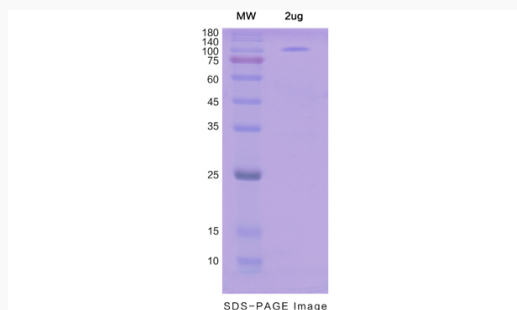
**mRNA Refseq** NM\_000210

**Protein Refseq** NP\_000201

**MIM** 147556

**UniProt ID** P23229

### SDS-PAGE



Tel: 1-631-559-9269 1-516-512-3133

Email: [info@creative-biomart.com](mailto:info@creative-biomart.com) Fax: 1-631-938-8127

45-1 Ramsey Road, Shirley, NY 11967, USA