

Recombinant Human ITGA7 Protein, GST-tagged

Cat. No. ITGA7-4994H **Lot. No.** (See product label)

SPECIFICATION

Product Overview	Human ITGA7 partial ORF (NP_002197, 478 a.a. - 577 a.a.) recombinant protein with GST-tag at N-terminal.
Species	Human
Source	Wheat Germ
Description	The protein encoded by this gene belongs to the integrin alpha chain family. Integrins are heterodimeric integral membrane proteins composed of an alpha chain and a beta chain. They mediate a wide spectrum of cell-cell and cell-matrix interactions, and thus play a role in cell migration, morphologic development, differentiation, and metastasis. This protein functions as a receptor for the basement membrane protein laminin-1. It is mainly expressed in skeletal and cardiac muscles and may be involved in differentiation and migration processes during myogenesis. Defects in this gene are associated with congenital myopathy. Alternatively spliced transcript variants encoding different isoforms have been noted for this gene. [provided by RefSeq]
Molecular Mass	36.74 kDa
AA Sequence	SHEVSIAPRSIDLEQPNCAGGHSVCVDLRVCFYSYIAVPSSYSPTVALDYVLDADTDR RLRGQVPRVTFLSRNLEEPKHQASGTVWLKHQHDRVCGDAMFQ
Applications	Enzyme-linked Immunoabsorbent Assay Western Blot (Recombinant protein) Antibody Production

 Tel: 1-631-559-9269 1-516-512-3133

 Email: info@creative-biomart.com  Fax: 1-631-938-8127

 45-1 Ramsey Road, Shirley, NY 11967, USA

Protein Array

Notes	Best use within three months from the date of receipt of this protein.
Storage	Store at -80 centigrade. Aliquot to avoid repeated freezing and thawing.
Storage Buffer	50 mM Tris-HCl, 10 mM reduced Glutathione, pH=8.0 in the elution buffer.

GENE INFORMATION

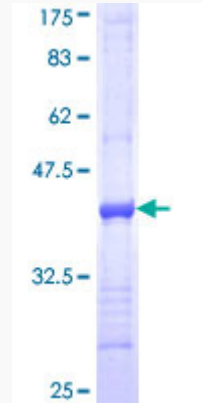
Gene Name	ITGA7 integrin, alpha 7 [Homo sapiens]
Official Symbol	ITGA7
Synonyms	ITGA7; integrin, alpha 7; integrin alpha-7; integrin alpha 7 chain; FLJ25220;
Gene ID	3679
mRNA Refseq	NM_001144996
Protein Refseq	NP_001138468
MIM	600536
UniProt ID	Q13683

 Tel: 1-631-559-9269 1-516-512-3133

 Email: info@creative-biomart.com  Fax: 1-631-938-8127

 45-1 Ramsey Road, Shirley, NY 11967, USA

**Quality Control
Testing**



12.5% SDS-PAGE Stained with Coomassie Blue

 Tel: 1-631-559-9269 1-516-512-3133

 Email: info@creative-biomart.com  Fax: 1-631-938-8127

 45-1 Ramsey Road, Shirley, NY 11967, USA