

Recombinant Full Length Human HSPA15 Protein, C-Flag-tagged

Cat. No. ITGA8-1313HFL Lot. No. (See product label)

SPECIFICATION

Product Overview

Recombinant Full Length Human ITGA8 Protein, fused to Flag-tag at C-terminus, was expressed in Mammalian cells.

Species

Human

Source

Mammalian Cells

Description

Integrins are heterodimeric transmembrane receptor proteins that mediate numerous cellular processes including cell adhesion, cytoskeletal rearrangement, and activation of cell signaling pathways. Integrins are composed of alpha and beta subunits. This gene encodes the alpha 8 subunit of the heterodimeric integrin alpha8beta1 protein. The encoded protein is a single-pass type 1 membrane protein that contains multiple FG-GAP repeats. This repeat is predicted to fold into a beta propeller structure. This gene regulates the recruitment of mesenchymal cells into epithelial structures, mediates cell-cell interactions, and regulates neurite outgrowth of sensory and motor neurons. The integrin alpha8beta1 protein thus plays an important role in wound-healing and organogenesis. Mutations in this gene have been associated with renal hypodysplasia/aplasia-1 (RHDA1) and with several animal models of chronic kidney disease. Alternate splicing results in multiple transcript variants encoding distinct isoforms.

Form

25 mM Tris HCl, pH 7.3, 100 mM glycine, 10% glycerol.

 Tel: 1-631-559-9269 1-516-512-3133

 Email: info@creative-biomart.com  Fax: 1-631-938-8127

 45-1 Ramsey Road, Shirley, NY 11967, USA

Molecular Mass	117.3 kDa
AA Sequence	<p>MSPGASRGPRGSQAPLIAPLCCAAAAALGMLLWSPACQAFNLDVEKLTVYSGPKGSY FGYAVDFHIPDART ASVLVGAPKANTSQPDIVEGGAVYYCPWPAEGSAQCRQIPFD TTNNRKIRVNGTKEPIEFKSNQWFGATV KAHKGKVVACAPLYHWRTLKPTPEKDPV GTCYVAIQNFSAEAFSPCRNSNADPEGQGYCQAGFSLDFYK NGDLIVGGPGSFY WQQQVITASVADIIANYSFKDILRKLAGEKQTEVAPASYDDSYLGYSVAAGEFTGDS QQELVAGIPRGAQNFYVSIINSTDMTFIQNFTGEQMASYFGYTVVVSVDVNSDGLDD VLVGAPLFMEREFSNPREVGGIYLYLQVSSLLFRDPQILTGTETFGFRFGSAMAHLG DLNQDGYNDIAIGVPPFAGKDQRGKVL IYNGNKDGLNTKPSQVLQGVWASHAVPSG FGFTLRGDSIDKNDYDPLIVGAFGTGKVAVYRARPVTVDAQLLLHPMIINLENKTC QVPDSMTSAACFSLRVCASVTGQSIANTIVLMAEVQLDSLKQKGAIKRTLFLD NHQA HRVFPLVIKRQKSHQCQDFIVYLRDETEFRDKLSPINISLNYSLDESTFKEGLEVKPIL NYYRENI VSEQAHLVDCGEDNLCVPLDLKLSARPDKHQVIIGDENHMLLIINARNEGE GAYEAEFVMIPEEADYVG IERNKNGFRPLSCEYKMENVTRMVVCDLGNPMVSGT NYSLGLRFAVPRLEKTNMSINFDLQIRSSNKDNP DSNFVSLQINITAVAQVEIRGVSH PPQIVLPIHNWEPEEEPHKEEEVGPLVEHIYELHNIGPSTISDTIL EVGWPF SARDEFL LYIFHIQTLGPLQCQPNPNINPQDIKPAASPEDPELSAFLRNSTIPHLVRKRDVHV V EFHRQSPAKILNCTNIECLQISCAVGRLEGGESAVLKVRSRLWAHTFLQRKNDPYAL ASLVSFEVKKMP YTDQPAKLPEGSIAIKTSVIWATPNVSFSIPLWVILAILLGLLVLAIL TLALWKCGFFDRARPPQEDMT DREQLTNDKTPEATRTRPLEQKLISEEDLAANDILDYKDDDDKV</p>
Purity	> 80% as determined by SDS-PAGE and Coomassie blue staining.
Stability	Stable for 12 months from the date of receipt of the product under proper storage and handling conditions. Avoid repeated freeze-thaw cycles.
Storage	Store at -80 centigrade.

 Tel: 1-631-559-9269 1-516-512-3133

 Email: info@creative-biomart.com  Fax: 1-631-938-8127

 45-1 Ramsey Road, Shirley, NY 11967, USA

Concentration	>50 ug/mL as determined by microplate BCA method.
Preparation	Recombinant protein was captured through anti-DDK affinity column followed by conventional chromatography steps.
Protein Families	Druggable Genome, Transmembrane
Protein Pathways	Arrhythmogenic right ventricular cardiomyopathy (ARVC), Cell adhesion molecules (CAMs), Dilated cardiomyopathy, ECM-receptor interaction, Focal adhesion, Hypertrophic cardiomyopathy (HCM), Regulation of actin cytoskeleton
Full Length	Full L.

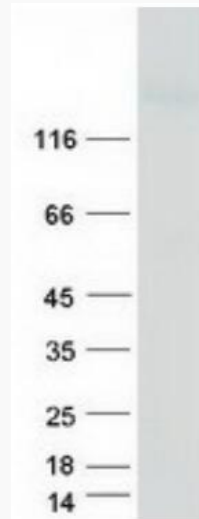
GENE INFORMATION

Gene Name	ITGA8 integrin subunit alpha 8 [Homo sapiens (human)]
Official Symbol	ITGA8
Synonyms	integrin, alpha 8; OTTHUMP00000019207
Gene ID	8516
mRNA Refseq	NM_003638.3
Protein Refseq	NP_003629.2
MIM	604063
UniProt ID	P53708

 Tel: 1-631-559-9269 1-516-512-3133

 Email: info@creative-biomart.com  Fax: 1-631-938-8127

 45-1 Ramsey Road, Shirley, NY 11967, USA



Coomassie blue staining of purified ITGA8 protein.

 Tel: 1-631-559-9269 1-516-512-3133

 Email: info@creative-biomart.com  Fax: 1-631-938-8127

 45-1 Ramsey Road, Shirley, NY 11967, USA