

# Recombinant Human ITGA8 Protein, MYC/DDK-tagged, C13 and N15-labeled

Cat. No. ITGA8-287H Lot. No. (See product label)

## SPECIFICATION

### Product Overview

ITGA8 MS Standard C13 and N15-labeled recombinant protein (NP\_003629) with a C-terminal MYC/DDK tag, was expressed in HEK293 cells.

### Species

Human

### Source

HEK293

### Description

Integrins are heterodimeric transmembrane receptor proteins that mediate numerous cellular processes including cell adhesion, cytoskeletal rearrangement, and activation of cell signaling pathways. Integrins are composed of alpha and beta subunits. This gene encodes the alpha 8 subunit of the heterodimeric integrin alpha8beta1 protein. The encoded protein is a single-pass type 1 membrane protein that contains multiple FG-GAP repeats. This repeat is predicted to fold into a beta propeller structure. This gene regulates the recruitment of mesenchymal cells into epithelial structures, mediates cell-cell interactions, and regulates neurite outgrowth of sensory and motor neurons. The integrin alpha8beta1 protein thus plays an important role in wound-healing and organogenesis. Mutations in this gene have been associated with renal hypodysplasia/aplasia-1 (RHDA1) and with several animal models of chronic kidney disease. Alternate splicing results in multiple transcript variants encoding distinct isoforms. [provided by RefSeq, Apr 2014]

### Molecular Mass

117.3 kDa

 Tel: 1-631-559-9269 1-516-512-3133

 Email: [info@creative-biomart.com](mailto:info@creative-biomart.com)  Fax: 1-631-938-8127

 45-1 Ramsey Road, Shirley, NY 11967, USA



**AA Sequence**

MSPGASRGPRGSQAPLIAPLCCAAAAALGMLLWSPACQAFNLDVEKLTVYSGPKGSY  
 FGYAVDFHIPDARTASVLVGAPKANTSQPDIVEGGAVYYCPWPAEGSAQCRQIPFD  
 TTNNRKRIVNGTKEPIEFKSNQWFGATVKAHKGKVVACAPLYHWRTLKPTPEKDPV  
 GTCYVAIQNFSAYAEFSPCRNSNADPEGQGYCQAGFSLDFYKNGDLIVGGPGSFY  
 WQQQVITASVADIANYSFKDILRKLAGEKQTEVAPASYDDSYLGYVAAGEFTGDS  
 QQELVAGIPRGAQNFGYVSIINSTDMTFIQNFTGEQMASYFGYTVVSDVNSDGLDD  
 VLVGAPLFMEREFESNPREGVQIYLYLQVSSLLFRDPQILTGTETFGFRFGSAMAHLG  
 DLNQDGYNDIAIGVPPFAGKDQRGKVLINGNKDGKLNTPKPSQVLQGVWASHAVPSGF  
 GFTLRGDSIDKNDYDPDLIVGAFGTGKVAVYRARPVVTVDAQLLLHPMIINLENKTCQ  
 VPDSMTSAACFSLRVCASVTGQSIANTIVLMAEVQLDSLKQKGAIKRTLFLDNHQA  
 RVFPLVIKRQKSHQCQDFIVYLRDETEFRDKLSPINISLNYSLDESTFKEGLEVKPILN  
 YYRENIVSEQAHLVDCGEDNLCVDPDLKLSARPDKHQVIIGDENHMLLIINARNEGEG  
 AYEAEFVMIPEEADYVGIERNKGFRLSCEYKMENVTRMVVCDLGNPMVSGTNY  
 SLGLRFAVPRLEKTNMSINFDLQIRSSNKDNPDSNFVSLQINITAVAQVEIRGVSHPP  
 QIVLPIHNWEPEEEPHKEEEVGPLVEHIYELHNIGPSTISDTILEVGWPF SARDEFLLYI  
 FHIQTLGPLQCQPNPNINPQDIKPAASPEDTPELSAFLRNSTIPHLVRKRDVHVVEFH  
 RQSPAKILNCTNIECLQISCAVGRLEGGESAVLKVRSRLWAHTFLQRKNDPYALASL  
 VSFEVKKMPYTDQPAKLPEGSIAIKTSVIWATPNV/SFSIPLVWVILAILLGLLVLAITLAL  
 WKCGFFDRARPPQEDMTDREQLTNDKTPEATRTRPLEQKLISEEDLAANDILDYKD  
 DDDKV

**Purity**

> 80% as determined by SDS-PAGE and Coomassie blue staining

**Stability**

Stable for 3 months from receipt of products under proper storage and handling conditions.

**Storage**

Store at -80 centigrade. Avoid repeated freeze-thaw cycles.

**Concentration**

50 µg/mL as determined by BCA

Tel: 1-631-559-9269 1-516-512-3133

Email: [info@creative-biomart.com](mailto:info@creative-biomart.com) Fax: 1-631-938-8127

45-1 Ramsey Road, Shirley, NY 11967, USA

**Storage Buffer** 100 mM glycine, 25 mM Tris-HCl, pH 7.3.

## GENE INFORMATION

**Gene Name** ITGA8 integrin, alpha 8 [ Homo sapiens (human) ]

**Official Symbol** ITGA8

**Synonyms** ITGA8; integrin, alpha 8; integrin alpha-8;

**Gene ID** 8516

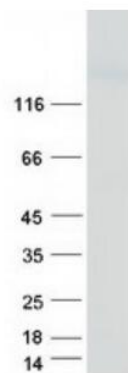
**mRNA Refseq** NM\_003638

**Protein Refseq** NP\_003629

**MIM** 604063

**UniProt ID** P53708

## SDS-PAGE



 Tel: 1-631-559-9269 1-516-512-3133

 Email: [info@creative-biomart.com](mailto:info@creative-biomart.com)  Fax: 1-631-938-8127

 45-1 Ramsey Road, Shirley, NY 11967, USA