

# Recombinant Human ITGA9 Protein, Myc/DDK-tagged, C13 and N15-labeled

**Cat. No.** ITGA9-2053H    **Lot. No.** (See product label)

## SPECIFICATION

|                         |   |
|-------------------------|---|
| <b>Product Overview</b> | ITGA9 MS Standard C13 and N15-labeled recombinant protein (NP_002198) with a C-terminal MYC/DDK tag, was expressed in HEK293 cells.   |
| <b>Species</b>          | Human   |
| <b>Source</b>           | HEK293  |
| <b>Description</b>      | This gene encodes an alpha integrin. Integrins are heterodimeric integral membrane glycoproteins composed of an alpha chain and a beta chain that mediate cell-cell and cell-matrix adhesion. The protein encoded by this gene, when bound to the beta 1 chain, forms an integrin that is a receptor for VCAM1, cytotactin and osteopontin. Expression of this gene has been found to be upregulated in small cell lung cancers.  |
| <b>Molecular Mass</b>   | 114.52 kDa  |
| <b>AA Sequence</b>      | MGGPAAPRGAGRLRALLLALVVAGIPAGAYNLDPQRPVHFQGPADSFFGYAVLEHF<br>HDNTRWVLVGAPKADSKYSPSVKSPGAVFKCRVHTNPDRRCTELDMARGKNRGTS<br>CGKTCREDRDDEWMGVSLARQPKADGRVLACAHRWKNIYYEADHILPHGFCYIIPS<br>NLQAKGRTLIPCYYEYKKKYGEEHGSCQAGIAGFFTEELVVMGAPGSFYWAGTIKVL<br>NLTDNTYLKLNDEVIMNRRYTYLGYAVTAGHFSHPSTIDVVGAPQDKGIGKVYIFRA<br>DRRSGTLIKIFQASGKKMGSYFGSSLCVLDLNGDGLSDLLVGAPMFSEIRDEGQVTV<br>YINRNGALEEQALALTGDGAYNAHFGESIASLDDLDNDGFPDVAIGAPKEDDFAGAV<br>YIYHGDASGIVPQYSMKLSGQKINPVLRMFGQSISGGIDMDGNGYPDVTVGAFMSD |

 Tel: 1-631-559-9269    1-516-512-3133

 Email: [info@creative-biomart.com](mailto:info@creative-biomart.com)     Fax: 1-631-938-8127

 45-1 Ramsey Road, Shirley, NY 11967, USA

SVVLLRARPVITVDVSIFLPGSINITAPQCHDGQQPVNCLNVTTCSFHGKHVPGEIG  
 LNYVLMADVAKKEKGQMPRVYFVLLGETMGQVTEKLQLTYMEETCRHYVAHVKRR  
 VQDVISPIVFEAAYSLSSEHVTGEEERELPPLTPVLRWKKGQKIAQKNQTVFERNCRS  
 EDCAADLQLQGKLLSSMDEKTLYLALGAVKNISLNISISNLGDDAYDANVSFNVSRE  
 LFFINMWQKEEMGISCELLESDFLKCSVGFPMRSKSKYEFSVIFDTSHLSGEEVLS  
 FIVTAQSGNTERSESLHDNTLVLMVPLMHEVDTSITGIMSPTSIFYGESVDAANFIQL  
 DDLECHFQPINITLQVYNTGPSTLPGSSVSISFPNRLSSGGAEMFHVQEMVVGQKEG  
 NCSFQKNPTPCIIPQEQENIFHTIFAFFTKSGRKVLDCEKPGISCLTAHCNFSALAKEE  
 SRTIDIYMLLNTEILKKDSSSVIQFMSRAKVKVDPALRVVEIAHGNPEEVTVVFEALHN  
 LEPRGYVVGWIIAISLLVGILIFLLAVLLWKMGGFFRRRYKEIIEAEKNRKENEDSWDW  
 VQKNQTRTRPLEQKLISEEDLAANDILDYKDDDDKV

**Purity** > 80% as determined by SDS-PAGE and Coomassie blue staining

**Stability** Stable for 3 months from receipt of products under proper storage and handling conditions.

**Storage** Store at -80 centigrade. Avoid repeated freeze-thaw cycles.

**Concentration** 50 µg/mL as determined by BCA

**Storage Buffer** 100 mM glycine, 25 mM Tris-HCl, pH 7.3.

## GENE INFORMATION

**Gene Name** [ITGA9 integrin subunit alpha 9 \[ Homo sapiens \(human\) \]](#)

**Official Symbol** [ITGA9](#)

**Synonyms** ITGA9; integrin, alpha 9; integrin alpha-9; ALPHA RLC; integrin; alpha 4 like; ITGA4L; RLC; integrin alpha-RLC; ALPHA-RLC;

 Tel: 1-631-559-9269 1-516-512-3133

 Email: [info@creative-biomart.com](mailto:info@creative-biomart.com)  Fax: 1-631-938-8127

 45-1 Ramsey Road, Shirley, NY 11967, USA

**Gene ID** 3680

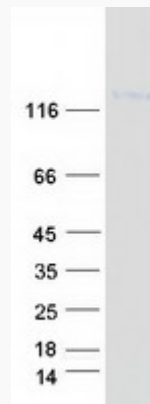
**mRNA Refseq** [NM\\_002207](#)


**Protein Refseq** [NP\\_002198](#)

**MIM** 603963

**UniProt ID** [Q13797](#)

**SDS-PAGE**



 Tel: 1-631-559-9269 1-516-512-3133

 Email: [info@creative-biomart.com](mailto:info@creative-biomart.com)  Fax: 1-631-938-8127

 45-1 Ramsey Road, Shirley, NY 11967, USA