

Recombinant Human ITGA9 Protein, GST-tagged

Cat. No. ITGA9-4992H **Lot. No.** (See product label)

SPECIFICATION

Product Overview	Human ITGA9 partial ORF (NP_002198, 785 a.a. - 886 a.a.) recombinant protein with GST-tag at N-terminal.
Species	Human
Source	Wheat Germ
Description	This gene encodes an alpha integrin. Integrins are heterodimeric integral membrane glycoproteins composed of an alpha chain and a beta chain that mediate cell-cell and cell-matrix adhesion. The protein encoded by this gene, when bound to the beta 1 chain, forms an integrin that is a receptor for VCAM1, cytotactin and osteopontin. Expression of this gene has been found to be upregulated in small cell lung cancers. [provided by RefSeq]
Molecular Mass	36.96 kDa
AA Sequence	GESVDAANFIQLDDLECHFQPINITLQVYNTGPSTLPGSSVSISFPNRLSSGGAEMFH VQEMVVGQEKGNCSEFQKNPTPCIIPQEQENIFHTIFAFFTKSGR
Applications	Enzyme-linked Immunoabsorbent Assay Western Blot (Recombinant protein) Antibody Production Protein Array
Notes	Best use within three months from the date of receipt of this protein.

 Tel: 1-631-559-9269 1-516-512-3133

 Email: info@creative-biomart.com  Fax: 1-631-938-8127

 45-1 Ramsey Road, Shirley, NY 11967, USA

Storage Store at -80 centigrade. Aliquot to avoid repeated freezing and thawing.

Storage Buffer 50 mM Tris-HCl, 10 mM reduced Glutathione, pH=8.0 in the elution buffer.

GENE INFORMATION

Gene Name ITGA9 integrin, alpha 9 [Homo sapiens]

Official Symbol ITGA9

Synonyms ITGA9; integrin, alpha 9; integrin alpha-9; ALPHA RLC; integrin; alpha 4 like; ITGA4L; RLC; integrin alpha-RLC; ALPHA-RLC;

Gene ID 3680

mRNA Refseq NM_002207

Protein Refseq NP_002198

MIM 603963

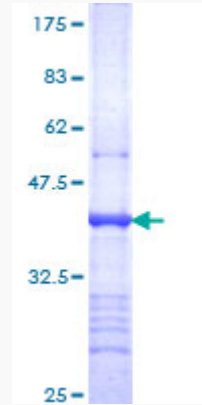
UniProt ID Q13797

 Tel: 1-631-559-9269 1-516-512-3133

 Email: info@creative-biomart.com  Fax: 1-631-938-8127

 45-1 Ramsey Road, Shirley, NY 11967, USA

**Quality Control
Testing**



12.5% SDS-PAGE Stained with Coomassie Blue

 Tel: 1-631-559-9269 1-516-512-3133

 Email: info@creative-biomart.com  Fax: 1-631-938-8127

 45-1 Ramsey Road, Shirley, NY 11967, USA