

# Recombinant Human ITGAE Protein (Met1-Ser1124), C-His tagged

**Cat. No.** ITGAE-4321H    **Lot. No.** (See product label)

## SPECIFICATION

<b>Product Overview</b>	Recombinant human ITGAE (Met1-Ser1124) fused with the C-terminal His tag was expressed in Mammalian cells.
<b>Species</b>	Human
<b>Source</b>	Mammalian Cells
<b>ProteinLength</b>	Met1-Ser1124
<b>Form</b>	Lyophilized powder/frozen liquid
<b>Molecular Mass</b>	123.64 kDa
<b>Endotoxin</b>	< 1.0 EU/μg of the protein as determined by the LAL method.
<b>Purity</b>	>90% as determined by SDS-PAGE.
<b>Notes</b>	For research use only.
<b>Storage</b>	Use a manual defrost freezer and avoid repeated freeze thaw cycles. Store at 2 to 8 centigrade for one week. Store at -20 to -80 centigrade for twelve months from the date of receipt.
<b>Storage Buffer</b>	Supplied as solution form in PBS or lyophilized from PBS.

 Tel: 1-631-559-9269    1-516-512-3133

 Email: [info@creative-biomart.com](mailto:info@creative-biomart.com)     Fax: 1-631-938-8127

 45-1 Ramsey Road, Shirley, NY 11967, USA

**Reconstitution** Reconstitute in sterile water for a stock solution.

**Shipping** They are shipped out with dry ice/blue ice unless customers require otherwise.

## GENE INFORMATION

**Gene Name** ITGAE integrin, alpha E (antigen CD103, human mucosal lymphocyte antigen 1; alpha polypeptide) [ Homo sapiens (human) ]

**Official Symbol** ITGAE

**Synonyms** ITGAE; integrin, alpha E (antigen CD103, human mucosal lymphocyte antigen 1; alpha polypeptide); integrin alpha-E; CD103; HUMINAE; HML-1 antigen; integrin alpha-IEL; mucosal lymphocyte 1 antigen; antigen CD103, human mucosal lymphocyte antigen 1; alpha polypeptide; MGC141996;

**Gene ID** 3682

**mRNA Refseq** NM\_002208

**Protein Refseq** NP\_002199

**MIM** 604682

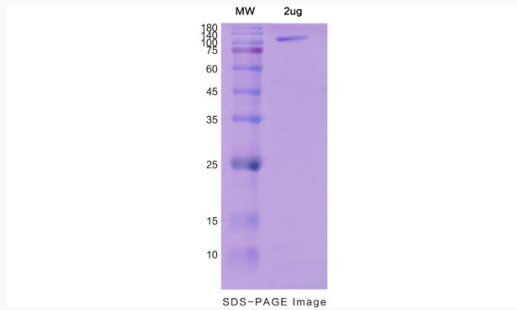
**UniProt ID** P38570

 Tel: 1-631-559-9269 1-516-512-3133

 Email: [info@creative-biomart.com](mailto:info@creative-biomart.com)  Fax: 1-631-938-8127

 45-1 Ramsey Road, Shirley, NY 11967, USA

**SDS-PAGE**



 Tel: 1-631-559-9269 1-516-512-3133

 Email: [info@creative-biomart.com](mailto:info@creative-biomart.com)  Fax: 1-631-938-8127

 45-1 Ramsey Road, Shirley, NY 11967, USA