

Recombinant Human ITGAE Protein, GST-tagged

Cat. No. ITGAE-4990H Lot. No. (See product label)

SPECIFICATION

Product Overview	Human ITGAE partial ORF (NP_002199, 57 a.a. - 171 a.a.) recombinant protein with GST-tag at N-terminal.
Species	Human
Source	Wheat Germ
Description	Integrins are heterodimeric integral membrane proteins composed of an alpha chain and a beta chain. This gene encodes an I-domain-containing alpha integrin that undergoes post-translational cleavage in the extracellular domain, yielding disulfide-linked heavy and light chains. In combination with the beta 7 integrin, this protein forms the E-cadherin binding integrin known as the human mucosal lymphocyte-1 antigen. This protein is preferentially expressed in human intestinal intraepithelial lymphocytes (IEL), and in addition to a role in adhesion, it may serve as an accessory molecule for IEL activation. [provided by RefSeq]
Molecular Mass	38.39 kDa
AA Sequence	SPRTKRTPGPLHRC SLVQDEILCHPVEHVPIPKGRHRGVTVVRSHHGVLICIQVLVRRPHSLSSELTGTCSLLGPDLRPQAQANFFDLENLLDPDARVDTGDCYSNKEGGGEDV
Applications	Enzyme-linked Immunoabsorbent Assay Western Blot (Recombinant protein) Antibody Production

 Tel: 1-631-559-9269 1-516-512-3133

 Email: info@creative-biomart.com  Fax: 1-631-938-8127

 45-1 Ramsey Road, Shirley, NY 11967, USA

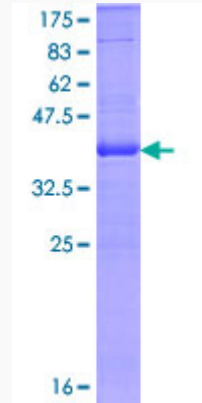
	Protein Array
Notes	Best use within three months from the date of receipt of this protein.
Storage	Store at -80 centigrade. Aliquot to avoid repeated freezing and thawing.
Storage Buffer	50 mM Tris-HCl, 10 mM reduced Glutathione, pH=8.0 in the elution buffer.
GENE INFORMATION	
Gene Name	ITGAE integrin, alpha E (antigen CD103, human mucosal lymphocyte antigen 1; alpha polypeptide) [Homo sapiens]
Official Symbol	ITGAE
Synonyms	ITGAE; integrin, alpha E (antigen CD103, human mucosal lymphocyte antigen 1; alpha polypeptide); integrin alpha-E; CD103; HUMINAE; HML-1 antigen; integrin alpha-IEL; mucosal lymphocyte 1 antigen; antigen CD103, human mucosal lymphocyte antigen 1; alpha polypeptide; MGC141996;
Gene ID	3682
mRNA Refseq	NM_002208
Protein Refseq	NP_002199
MIM	604682
UniProt ID	P38570

 Tel: 1-631-559-9269 1-516-512-3133

 Email: info@creative-biomart.com  Fax: 1-631-938-8127

 45-1 Ramsey Road, Shirley, NY 11967, USA

**Quality Control
Testing**



12.5% SDS-PAGE Stained with Coomassie Blue

 Tel: 1-631-559-9269 1-516-512-3133

 Email: info@creative-biomart.com  Fax: 1-631-938-8127

 45-1 Ramsey Road, Shirley, NY 11967, USA