

# Recombinant Human ITGAL Protein (Asn809-His1066), N-His tagged

Cat. No. ITGAL-0900H Lot. No. (See product label)

## SPECIFICATION

<b>Product Overview</b>	Recombinant Human CD11a/ITGAL (Asn809-His1066) fused with the N-His tag was expressed in E. coli.
<b>Species</b>	Human
<b>Source</b>	E.coli
<b>ProteinLength</b>	Asn809-His1066
<b>Form</b>	Lyophilized powder/frozen liquid
<b>Molecular Mass</b>	31.16 kDa
<b>Purity</b>	>90% as determined by SDS-PAGE.
<b>Notes</b>	For research use only.
<b>Storage</b>	Use a manual defrost freezer and avoid repeated freeze thaw cycles. Store at 2 to 8 centigrade for one week. Store at -20 to -80 centigrade for twelve months from the date of receipt.
<b>Storage Buffer</b>	0.01M PBS, pH 7.4, 0.02% NLS
<b>Reconstitution</b>	Reconstitute in sterile water for a stock solution.

 Tel: 1-631-559-9269 1-516-512-3133

 Email: [info@creative-biomart.com](mailto:info@creative-biomart.com)  Fax: 1-631-938-8127

 45-1 Ramsey Road, Shirley, NY 11967, USA

**Shipping** They are shipped out with dry ice/blue ice unless customers require otherwise.

## GENE INFORMATION

**Gene Name** ITGAL integrin, alpha L (antigen CD11A (p180), lymphocyte function-associated antigen 1; alpha polypeptide) [ Homo sapiens (human) ]

**Official Symbol** ITGAL

**Synonyms** ITGAL; integrin, alpha L (antigen CD11A (p180), lymphocyte function-associated antigen 1; alpha polypeptide); CD11A; integrin alpha-L; LFA 1; LFA-1A; LFA-1 alpha; integrin gene promoter; CD11 antigen-like family member A; lymphocyte function-associated antigen 1; leukocyte adhesion glycoprotein LFA-1 alpha chain; leukocyte function-associated molecule 1 alpha chain; antigen CD11A (p180), lymphocyte function-associated antigen 1, alpha polypeptide; LFA-1; LFA1A;

**Gene ID** 3683

**mRNA Refseq** NM\_001114380

**Protein Refseq** NP\_001107852

**MIM** 153370

**UniProt ID** P20701

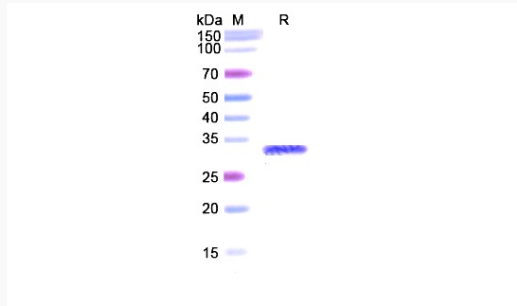
 Tel: 1-631-559-9269 1-516-512-3133

 Email: [info@creative-biomart.com](mailto:info@creative-biomart.com)  Fax: 1-631-938-8127

 45-1 Ramsey Road, Shirley, NY 11967, USA



SDS-PAGE



Tel: 1-631-559-9269 1-516-512-3133

Email: [info@creative-biomart.com](mailto:info@creative-biomart.com) Fax: 1-631-938-8127

45-1 Ramsey Road, Shirley, NY 11967, USA