

# Active Recombinant Full Length Human ITGAL Protein, C-Flag-tagged

**Cat. No.** ITGAL-168HFL    **Lot. No.** (See product label)

## SPECIFICATION

<b>Product Overview</b>	Recombinant Full Length Human ITGAL Protein, fused to Flag-tag at C-terminus, was expressed in Mammalian cells.
<b>Species</b>	Human
<b>Source</b>	Mammalian Cells
<b>Description</b>	ITGAL encodes the integrin alpha L chain. Integrins are heterodimeric integral membrane proteins composed of an alpha chain and a beta chain. This I-domain containing alpha integrin combines with the beta 2 chain (ITGB2) to form the integrin lymphocyte function-associated antigen-1 (LFA-1), which is expressed on all leukocytes. LFA-1 plays a central role in leukocyte intercellular adhesion through interactions with its ligands, ICAMs 1-3 (intercellular adhesion molecules 1 through 3), and also functions in lymphocyte costimulatory signaling. Two transcript variants encoding different isoforms have been found for this gene.
<b>Form</b>	25 mM Tris HCl, pH 7.3, 100 mM glycine, 10% glycerol.
<b>Bio-activity</b>	Far-Western blot
<b>Molecular Mass</b>	126.1 kDa
<b>AA Sequence</b>	MKDSCITVMAMALLSGFFFFAPASSYNLDVVRGARSFSPPRAGRHFYRVLQVGNV IVGAPGEGNSTGSL YQCQSGTGHCLPVTLRGSNYTSKYLGMTLATDPTDGSILACD


 Tel: 1-631-559-9269    1-516-512-3133

 Email: [info@creative-biomart.com](mailto:info@creative-biomart.com)     Fax: 1-631-938-8127


 45-1 Ramsey Road, Shirley, NY 11967, USA

PGLSRTCDQNTYLSGLCYLFRQNLQGPM LQGRPGFQECIKGNVDLVFLFDGSMSL  
 QPDEFQKILDFMKDVMKKLSNTSYQFAAVQFSTSYKTEFDFSD YVKKRDPDALLKH  
 VKHMLLLTNTFGAINYVATEVFREELGARPDATKVLIIITDGEATDSGNIDAAKDII RYII  
 GIGKHFQTKESQETLHKFASKPASEFVKILDTFEKLKDLFTELQKKIYVIEGTSKQDLT  
 SFNMELS SSGISADLSRGHAVVGAVGAKDWAGGFLDLKADLQDDTFIGNEPLTPEV  
 RAGYLGTYVTWLPSRQKTSLL ASGAPRYQHMGRVLLFQEPQGGGHWSQVQTIHG  
 TQIGSYFGGELCGVDVDQDGETELLIGAPLFYGEQR GGRVFIYQRRQLGFEEVSE  
 LQGDPGYPLGRFGEAITALTDINGDGLVDVAVGAPLEEQGAVYIFNGRHGG LSPQP  
 SQRIEGTQVLSGIQWFGRSIHGVDLEGDGLADVAVGAESQMIVLSSRPVDMVTL  
 MSFSPAEIP VHEVECSYSTSNKMKEGVNITICFQIKSLIPQFQGRLVANLTYTLQLDG  
 HRTRRRGLFPGGRHELRRNIA VTTSMCTDFSFHFPVCVQDLISPINVSLNFSLWEE  
 EGTPRDQRAQGGKIPPILRPSLHSETWEIPFEKN CGEDKKCEANLRVSFSPARSRA  
 LRLTAFASLSVELSLSNLEEDAYWVQLDLHFPPGLSFRKVEMLKPHSQ IPVSCEELP  
 EESRLLSRALSCNVSSPIFKAGHSVALQMMFNTLVNSSWGDVELHANVTCNEDS  
 DLLED NSATTIIPILYPINILIQDQEDSTLYVSFTPKGPKIHQVKHMYQVRIQPSIHDHNI  
 PTLEAVVGVPPPS EGPITHQWSVQMEPPVPCHYEDLERLPDAAEPCLPGALFRC  
 PVVFRQEILVQVIGTLELVGEIEASSMFS LCSSLSISFNSSKHFHLYGSNASLAQVVM  
 KVDVVEKQMLYLYVLSGIGGLLLLLLIFIVLYKVGFFKRN  
 LKEKMEAGRGVPNGIPAEDSEQLASGQEAGDPGCKLPLHEKDSESGGGKDTRTRP  
 LEQKLISEEDLAANDILDYKDDDDKV

<b>Purity</b>	> 80% as determined by SDS-PAGE and Coomassie blue staining.
<b>Stability</b>	Stable for 12 months from the date of receipt of the product under proper storage and handling conditions. Avoid repeated freeze-thaw cycles.
<b>Storage</b>	Store at -80 centigrade.
<b>Concentration</b>	>50 ug/mL as determined by microplate BCA method.

 Tel: 1-631-559-9269 1-516-512-3133

 Email: [info@creative-biomart.com](mailto:info@creative-biomart.com)  Fax: 1-631-938-8127

 45-1 Ramsey Road, Shirley, NY 11967, USA

<b>Preparation</b>	Recombinant protein was captured through anti-DDK affinity column followed by conventional chromatography steps.
<b>Protein Families</b>	Druggable Genome, ES Cell Differentiation/IPS, Transmembrane
<b>Protein Pathways</b>	Cell adhesion molecules (CAMs), Leukocyte transendothelial migration, Natural killer cell mediated cytotoxicity, Regulation of actin cytoskeleton, Viral myocarditis
<b>Full Length</b>	Full L.

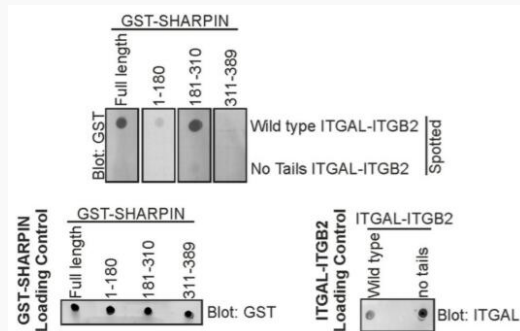
## GENE INFORMATION

<b>Gene Name</b>	ITGAL integrin subunit alpha L [ Homo sapiens (human) ]
<b>Official Symbol</b>	ITGAL
<b>Synonyms</b>	CD11A; LFA-1; LFA1A
<b>Gene ID</b>	3683
<b>mRNA Refseq</b>	NM_002209.3
<b>Protein Refseq</b>	NP_002200.2
<b>MIM</b>	153370
<b>UniProt ID</b>	P20701

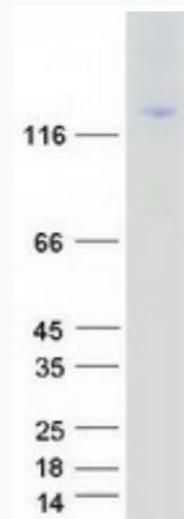
 Tel: 1-631-559-9269 1-516-512-3133

 Email: [info@creative-biomart.com](mailto:info@creative-biomart.com)  Fax: 1-631-938-8127

 45-1 Ramsey Road, Shirley, NY 11967, USA



The UBL domain (181-310) of SHARPIN mediates its binding to cytoplasmic tails of integrin, as analyzed by Far-Western of GST-SHARPIN (fulllength or fragments) binding to full-length ITGALITGB2 or ITGAL-ITGB2 lacking both cytoplasmic tails. Loading controls for GST-SHARPIN (full-length or fragments) and both ITGAL-ITGB2s are shown.



Coomassie blue staining of purified ITGAL protein.