

Recombinant Human ITGAL protein, His & T7-tagged

Cat. No. ITGAL-7134H **Lot. No.** (See product label)

SPECIFICATION

Product Overview	Recombinant Human ITGAL aa. (Asn809~His1066 (Accession # P20701)) fused with N-terminal His & T7 tag was produced in E. coli cells.
Species	Human
Source	E.coli
ProteinLength	Asn809~His1066
Form	Freeze-dried powder
Molecular Mass	36kDa as determined by SDS-PAGE reducing conditions.
Endotoxin	<1.0EU per 1ug (determined by the LAL method)
Purity	>95%
Characteristic	The isoelectric point is 5.5.
Applications	SDS-PAGE; WB; ELISA; IP.
Stability	The thermal stability is described by the loss rate of the target protein. The loss rate was determined by accelerated thermal degradation test, that is, incubate the protein at 37°C for 48h, and no obvious degradation and precipitation were observed. (Referring from China Biological Products Standard, which was calculated by the

 Tel: 1-631-559-9269 1-516-512-3133

 Email: info@creative-biomart.com  Fax: 1-631-938-8127

 45-1 Ramsey Road, Shirley, NY 11967, USA

Arrhenius equation.) The loss of this protein is less than 5% within the expiration date under appropriate storage condition.

Storage

Avoid repeated freeze/thaw cycles. Store at 2-8°C for one month. Aliquot and store at -80°C for 12 months.

Storage buffer

Supplied as lyophilized form in PBS, pH7.4, containing 5% sucrose, 0.01% sarcosyl.

Reconstitution

Reconstitute in sterile PBS, pH7.2-pH7.4.

GENE INFORMATION

Gene Name

[ITGAL integrin subunit alpha L \[Homo sapiens \(human\) \]](#)

Official Symbol

[ITGAL](#)

Synonyms

ITGAL; integrin subunit alpha L; CD11A; LFA-1; LFA1A; integrin alpha-L; CD11 antigen-like family member A; LFA-1 alpha; LFA-1A; antigen CD11A (p180), lymphocyte function-associated antigen 1, alpha polypeptide; antigen CD11A (p180), lymphocyte function-associated antigen 1, alpha polypeptide; integrin, alpha L (antigen CD11A (p180), lymphocyte function-associated antigen 1; alpha polypeptide); leukocyte adhesion glycoprotein LFA-1 alpha chain; leukocyte function-associated molecule 1 alpha chain; lymphocyte function-associated antigen 1, alpha polypeptide

Gene ID

[3683](#)

mRNA Refseq

[NM_001114380.1](#)

Protein Refseq

[NP_001107852.1](#)

 Tel: 1-631-559-9269 1-516-512-3133

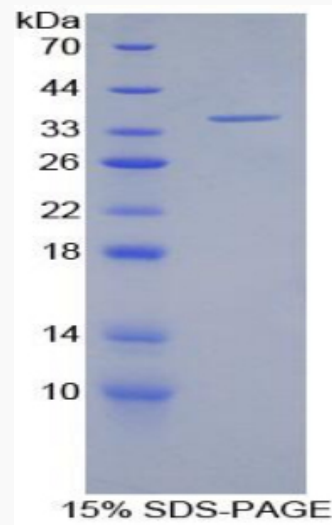
 Email: info@creative-biomart.com  Fax: 1-631-938-8127

 45-1 Ramsey Road, Shirley, NY 11967, USA

UniProt ID

P20701

SDS-PAGE



 Tel: 1-631-559-9269 1-516-512-3133

 Email: info@creative-biomart.com  Fax: 1-631-938-8127

 45-1 Ramsey Road, Shirley, NY 11967, USA