

## Recombinant Human ITGAL protein, His-tagged

Cat. No. ITGAL-754H Lot. No. (See product label)

### SPECIFICATION

<b>Product Overview</b>	Recombinant Human ITGAL protein(P20701)(150-336aa), fused with C-terminal His tag, was expressed in E.coli.
<b>Species</b>	Human
<b>Source</b>	E.coli
<b>ProteinLength</b>	150-336a.a.
<b>Tag</b>	His
<b>Form</b>	If the delivery form is liquid, the default storage buffer is Tris/PBS-based buffer, 5%-50% glycerol. If the delivery form is lyophilized powder, the buffer before lyophilization is Tris/PBS-based buffer, 6% Trehalose, pH 8.0.
<b>Molecular Mass</b>	28.2 kDa
<b>Purity</b>	Greater than 90% as determined by SDS-PAGE.
<b>Storage</b>	Store at -20°C/-80°C upon receipt, aliquoting is necessary for mutiple use. Avoid repeated freeze-thaw cycles.
<b>Reconstitution</b>	We recommend that this vial be briefly centrifuged prior to opening to bring the contents to the bottom. Please reconstitute protein in deionized sterile water to a concentration of 0.1-1.0 mg/mL.We recommend to add 5-50% of glycerol (final

 Tel: 1-631-559-9269 1-516-512-3133

 Email: [info@creative-biomart.com](mailto:info@creative-biomart.com)  Fax: 1-631-938-8127

 45-1 Ramsey Road, Shirley, NY 11967, USA

concentration) and aliquot for long-term storage at -20°C/-80°C.

**AA Sequence**

CIKGNVDLVFLFDGSMQLPDEFQKILDFMKDVMKKLSNTSYQFAAVQFSTSYKTEF  
 DFSDYVKKRDPDALLKHVKHMLLLTNTFGAINYVATEVFREELGARPDATKVLIIITDG  
 EATDSGNIDAADKIIRYIIGIGKHFQTKESQETLHKFASKPASEFVKILDTFEKLKDLFTE  
 LQKKIYVIEG

## GENE INFORMATION

**Gene Name**

ITGAL integrin, alpha L (antigen CD11A (p180), lymphocyte function-associated antigen 1; alpha polypeptide) [ Homo sapiens ]

**Official Symbol**

ITGAL

**Synonyms**

ITGAL; integrin, alpha L (antigen CD11A (p180), lymphocyte function-associated antigen 1; alpha polypeptide); CD11A; integrin alpha-L; LFA 1; LFA-1A; LFA-1 alpha; integrin gene promoter; CD11 antigen-like family member A; lymphocyte function-associated antigen 1; leukocyte adhesion glycoprotein LFA-1 alpha chain; leukocyte function-associated molecule 1 alpha chain; antigen CD11A (p180), lymphocyte function-associated antigen 1, alpha polypeptide; LFA-1; LFA1A;

**Gene ID**

3683

**mRNA Refseq**

NM\_001114380

**Protein Refseq**

NP\_001107852

**MIM**

153370

**UniProt ID**

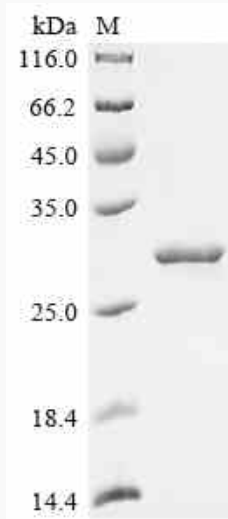
P20701

 Tel: 1-631-559-9269 1-516-512-3133

 Email: [info@creative-biomart.com](mailto:info@creative-biomart.com)  Fax: 1-631-938-8127

 45-1 Ramsey Road, Shirley, NY 11967, USA

**SDS-PAGE**



 Tel: 1-631-559-9269 1-516-512-3133

 Email: [info@creative-biomart.com](mailto:info@creative-biomart.com)  Fax: 1-631-938-8127

 45-1 Ramsey Road, Shirley, NY 11967, USA